

GNDLF TWO ARRIVAL (RNAV) Transition Routes

SE-4, 31 OCT 2024 to 28 NOV 2024

D-ATIS ARR
119.65
ATLANTA APP CON
127.9 379.9



NOTE: RADAR required.

NOTE: RNAV 1.

NOTE: DME/DME/IRU or GPS required.

NOTE: Turbojet aircraft only.

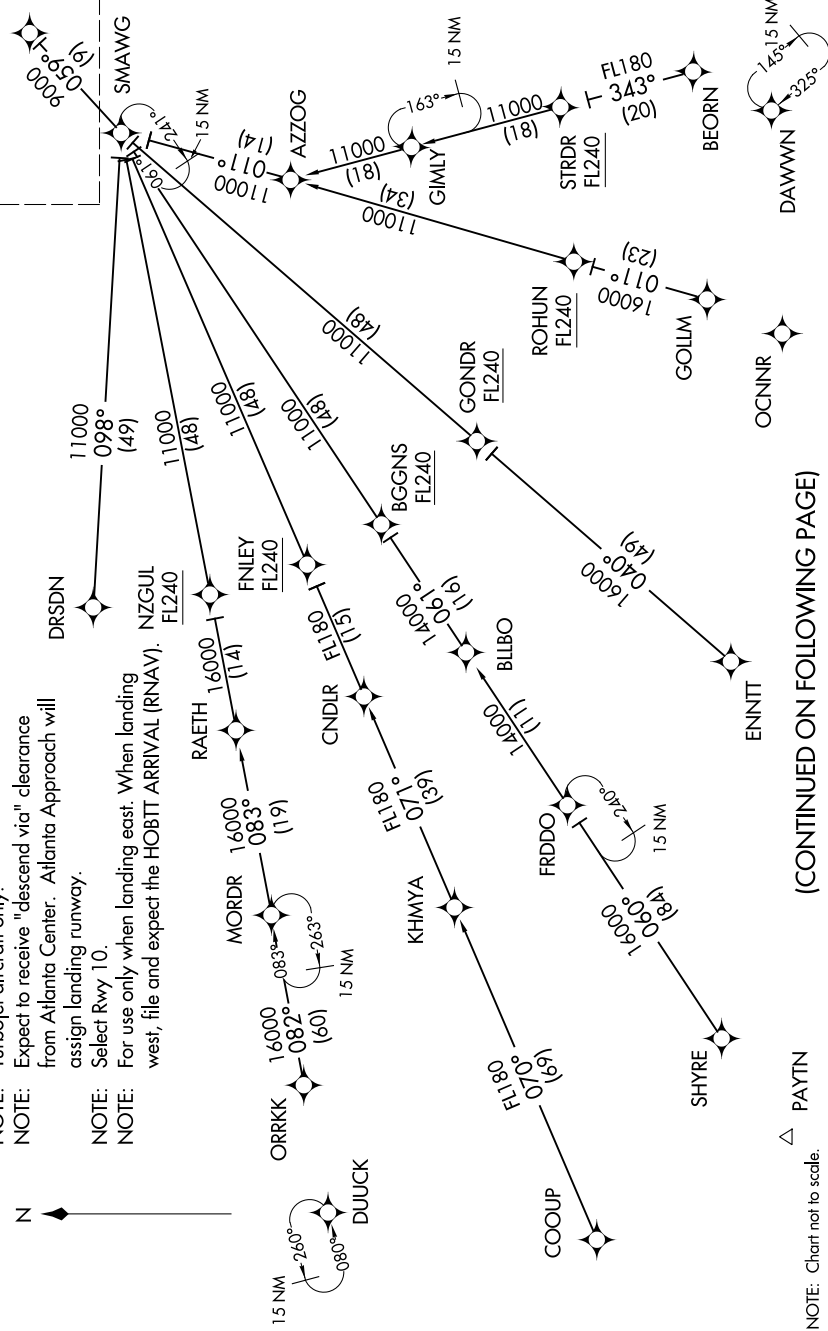
NOTE: Expect to receive "descend via" clearance from Atlanta Center. Atlanta Approach will assign landing runway.

NOTE: Select Rwy 10.

NOTE: For use only when landing east. When landing west, file and expect the HOBTT ARRIVAL (RNAV).

See following page for Arrival Routes.

GNDLF
11 000 250K



NOTE: Chart not to scale.

(CONTINUED ON FOLLOWING PAGE)

SE-4, 31 OCT 2024 to 28 NOV 2024

GNDLF TWO ARRIVAL (RNAV) Transition Routes