

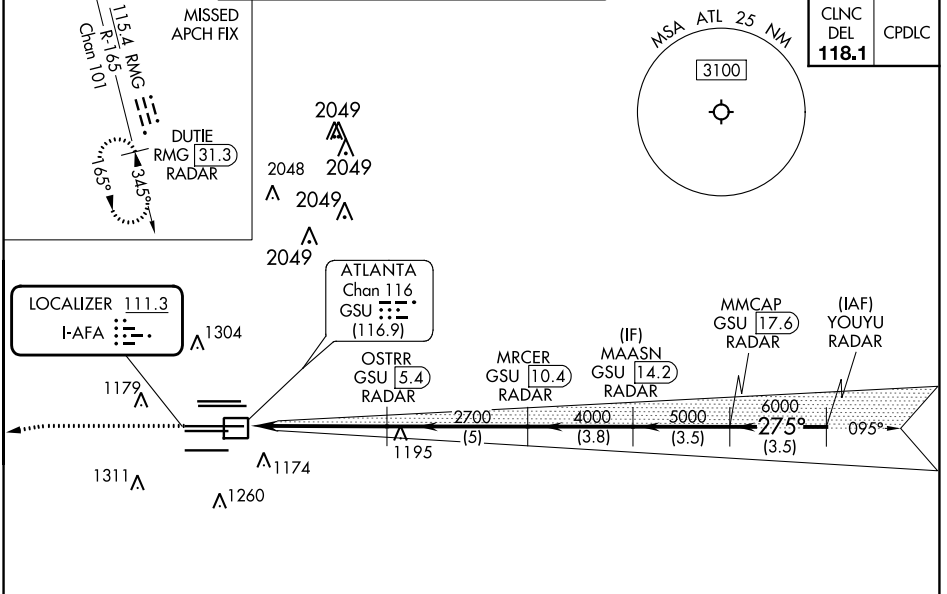
LOC I-AFA	APP CRS	Rwy Idg	27R	27L
111.3	275°	11890	8865	
		TDZE	985	999
		Apt Elev	1026	1026

ILS or LOC RWY 27R

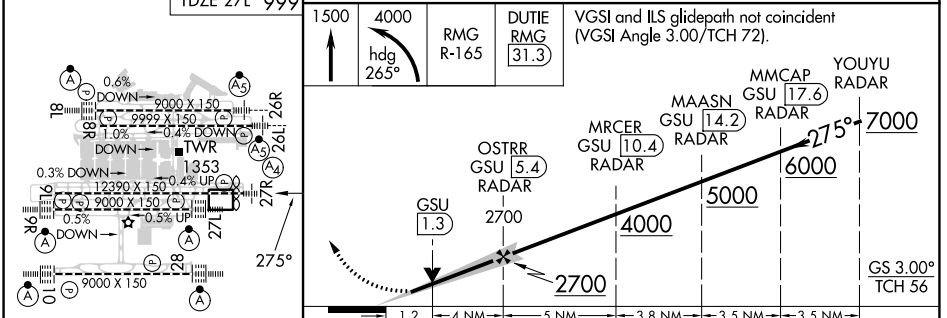
HARTSFIELD/JACKSON ATLANTA INTL (ATL)

DME and RADAR required.		Rwy 27R MALS	Rwy 27L ALSF-2	MISSED APPROACH: Climb to 1500 then climbing left turn to 4000 on heading 265° and RMG VORTAC R-165 to DUTIE/RMG 31.3 DME/RADAR and hold.
<p>Simultaneous approach authorized. Inop table does not apply to S-ILS 27R all Cats. DME from GSU DME. DME use requires simultaneous reception of I-AFA and GSU DME.</p>		(A)	(A)	

D-ATIS	ATLANTA	ATLANTA TOWER					ALL	GND CON	ALL
ARR 119.65	APP CON	8L-26R	8R-26L	9L-27R	9R-27L	10-28	RWYS	(8L-26R,8R-26L)	(9L-27R,9R-27L)
DEP 125.55	127.9	379.9	119.1	125.325	123.85	119.3	119.5	254.4	121.9
									121.75
									121.65
									254.4



ELEV 1026	D	TDZE 27R 985	TDZE 27L 999
-----------	---	--------------	--------------



HIRL all Rwys	TDZ/CL Rwys 8L, 9R, 10, 26R, 27L and 28	FAF to MAP 5.2 NM			
Knots	60	90	120	150	180
Min:Sec	5:12	3:28	2:36	2:05	1:44
CATEGORY	A	B	C	D	
S-ILS 27R	1185/40		200 (200-¾)		
S-LOC 27R	1420/40	435 (400-¾)	1420/50	435 (400-1)	
SIDESTEP 27L	1420/55 421 (400-1)			1420-1½	421 (400-1½)

SE-4, 31 OCT 2024 to 28 NOV 2024

SE-4, 31 OCT 2024 to 28 NOV 2024