

LOC/DME I-ATL <b>109.9</b> Chan <b>36</b>	APP CRS <b>095°</b>	Rwy Idg TDZE Apt Elev	8R <b>9999 8800</b> <b>1024 1015</b> <b>1026 1026</b>	8L <b>8800</b> <b>1015</b> <b>1026</b>
---	------------------------	-----------------------------	--	---

# ILS or LOC RWY 8R

HARTSFIELD/JACKSON ATLANTA INTL (ATL)

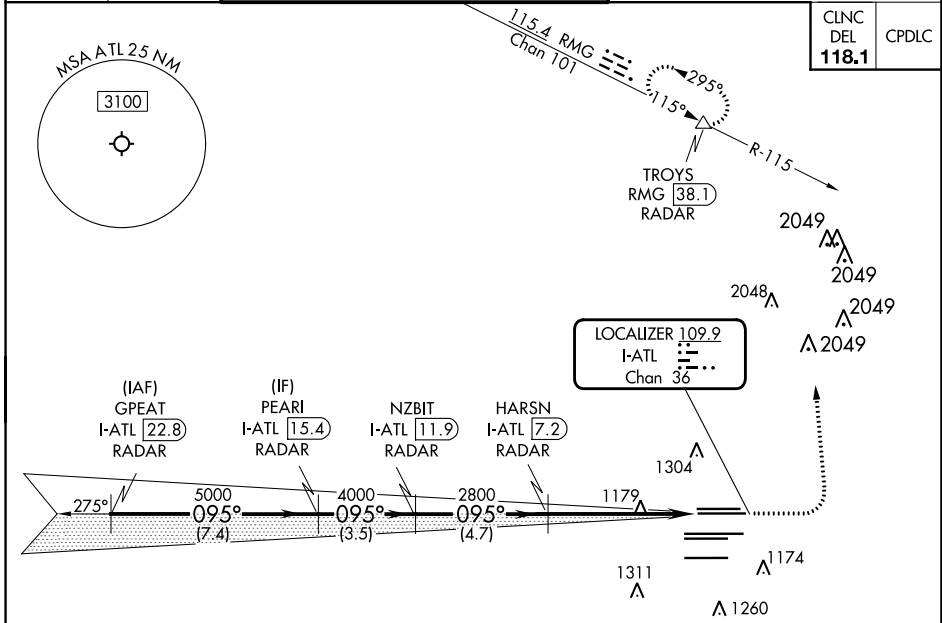
RADAR required for procedure entry.  
DME or RADAR required.

Simultaneous approach authorized. Sidestep 8L for inop ALSF-2, increase Cat E visibility to 2.



MISSED APPROACH: Climb to 1500 then climbing left turn to 3500 on heading 360° and RMG VORTAC R-115 to TROYS/RMG 38.1 DME/RADAR and hold.

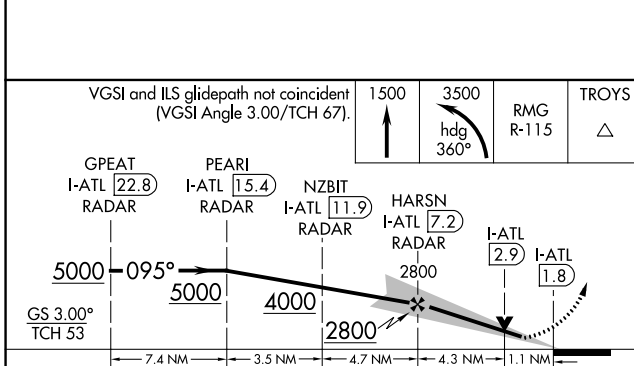
D-ATIS ARR <b>119.65</b>	ATLANTA APP CON <b>127.9 379.9</b>	ATLANTA TOWER					ALL RWYS	GND CON	ALL RWYS
DEP <b>125.55</b>		8L-26R	8R-26L	9L-27R	9R-27L	10-28	(8L-26R, 8R-26L)	(9L-27R, 9R-27L)	10-28
		<b>119.1</b>	<b>125.325</b>	<b>123.85</b>	<b>119.3</b>	<b>119.5</b>	<b>121.9</b>	<b>121.75</b>	<b>121.65</b>
									<b>254.4</b>



CINCL DEL	CPDLC
<b>118.1</b>	

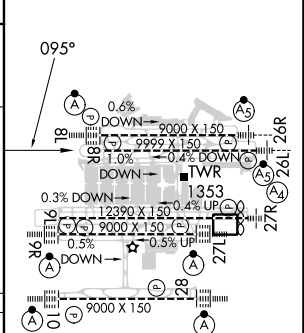
SE-4, 31 OCT 2024 to 28 NOV 2024

SE-4, 31 OCT 2024 to 28 NOV 2024



ELEV 1026	TDZE 8R 1024	TDZE 8L 1015
-----------	--------------	--------------

VGSI and ILS glidepath not coincident (VGSI Angle 3.00/TCH 67).					1500	3500	RMG R-115	TROYS	
GPEAT I-ATL [22.8] RADAR	PEARL I-ATL [15.4] RADAR	NZBIT I-ATL [11.9] RADAR	HARSN I-ATL [7.2] RADAR	I-ATL [2.9]	I-ATL [1.8]				
GS 3.00° TCH 53									
					7.4 NM	3.5 NM	4.7 NM	4.3 NM	1.1 NM



CATEGORY	A	B	C	D	E
S-ILS 8R	1282/40		258 (300-¾)		
S-LOC 8R	1440/55	416 (500-1)	1440/60 416 (500-1¼)		
SIDESTEP 8L	1440/55	425 (500-1)	1440/60 425 (500-1¼)	1440-1½	425 (500-1½)

HIRL all Rwys TDZ/CL Rwys 8L, 9R, 10, 26R, 27L and 28					
FAF to MAP 5.4 NM					
Knots	60	90	120	150	180
Min:Sec	5:24	3:36	2:42	2:10	1:48