

ATLANTA, GEORGIA

AL-26 (FAA)

24305  
**ILS PRM RWY 27L (CAT II)**

**(CLOSE PARALLEL)**

HARTSFIELD/JACKSON ATLANTA INTL (ATL)

LOC/DME I-FSQ <b>108.5</b> Chan <b>22</b>	APP CRS <b>275°</b>	Rwy Idg TDZE <b>999</b> Apt Elev <b>1026</b>	<b>8865</b>
---	------------------------	--	-------------

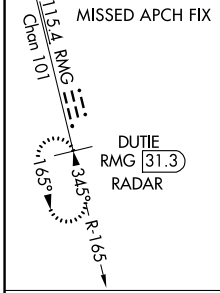
RADAR required for procedure entry. DME or RADAR required.

Simultaneous approach authorized. Use of FD or AP required during simultaneous operations. Dual VHF comm required. See additional requirements on AAUP.

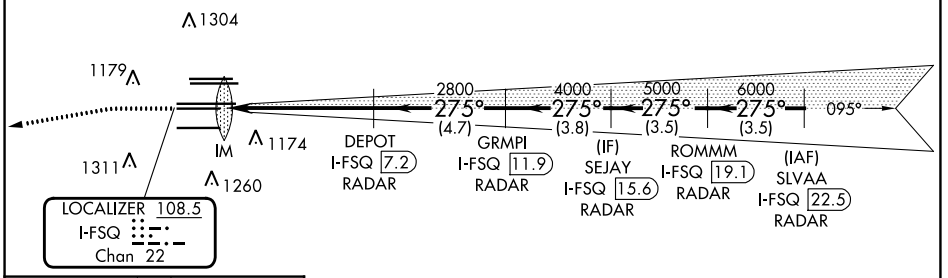
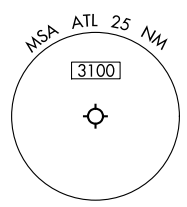
ALSf-2

MISSED APPROACH: Climb to 1500 then climbing left turn to 4000 on heading 265° and RMG VORTAC R-165 to DUTIE/RMG 31.3 DME/RADAR and hold.

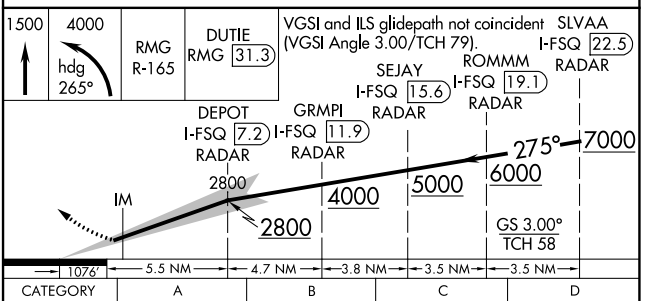
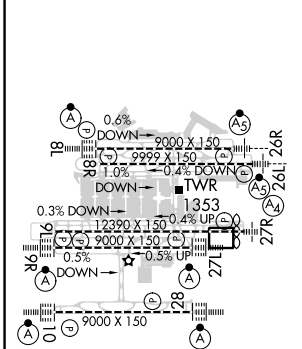
D-ATIS ARR <b>119.65</b> <b>125.55</b>	ATLANTA APP CON <b>127.9 379.9</b>	ATLANTA TOWER 8L-26R 8R-26L 9L-27R 9R-27L 10-28 <b>119.1 125.325 123.85 119.3 119.5 254.4</b> PRM <b>132.55</b>	ALL RWYS (8L-26R,8R-26L) (9L-27R,9R-27L) 10-28 <b>121.9 121.75 121.65 254.4</b>
--	--	--	--



CLNC DEL <b>118.1</b>	CPDLC
-----------------------------	-------



ELEV <b>1026</b>	<b>D</b>	TDZE <b>999</b>
------------------	----------	-----------------



CATEGORY	A	B	C	D
S-ILS 27L	RA 127/12 100 DA 1099			

**CATEGORY II ILS- SPECIAL AIRCREW & AIRCRAFT CERTIFICATION REQUIRED**

HIRL all Rwys  
TDZ/CL Rwys 8L, 9R,  
10, 26R, 27L and 28

33°38'N-84°26'W HARTSFIELD/JACKSON ATLANTA INTL (ATL)  
**ILS PRM RWY 27L (CAT II) (CLOSE PARALLEL)**

SE-4, 31 OCT 2024 to 28 NOV 2024

SE-4, 31 OCT 2024 to 28 NOV 2024