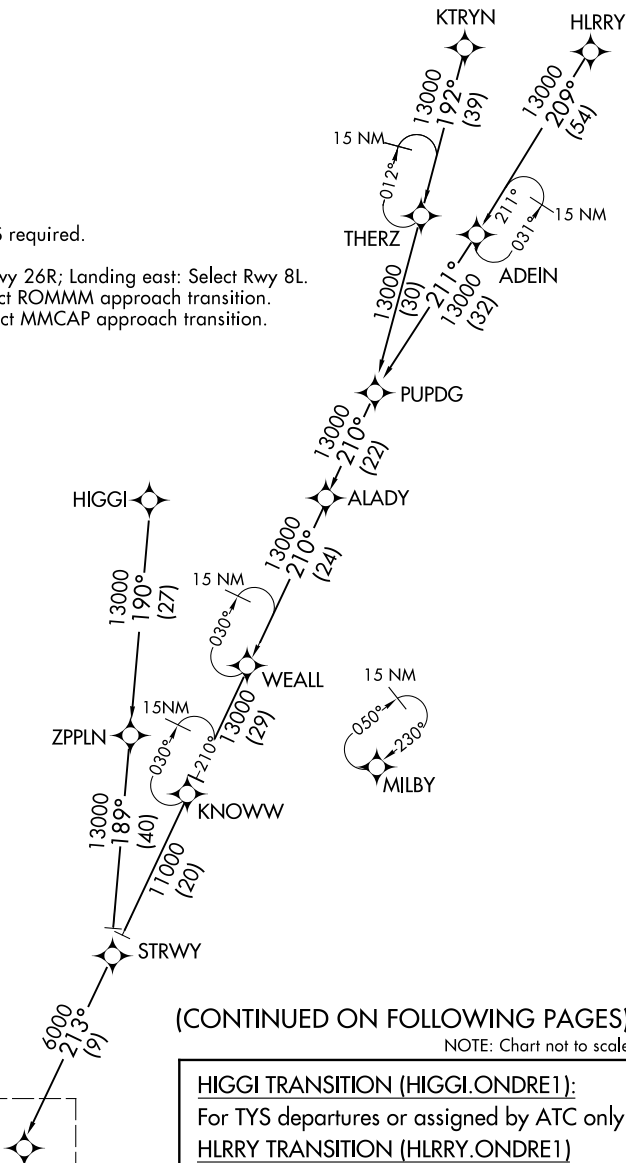


ONDR ONE ARRIVAL (RNAV) Transition Routes

D-ATIS ARR
119.65
ATLANTA APP CON
128.525 379.9

- NOTE: RADAR required.
- NOTE: RNAV 1.
- NOTE: DME/DME/IRU or GPS required.
- NOTE: Turbojet aircraft only.
- NOTE: Landing west: Select Rwy 26R; Landing east: Select Rwy 8L.
- NOTE: Landing Rwy 27L: Select ROMMM approach transition.
- NOTE: Landing Rwy 27R: Select MMCAP approach transition.



(CONTINUED ON FOLLOWING PAGES)

NOTE: Chart not to scale.

ONDR
13000
Landing west
Expect 250K
See following page
for Arrival Routes.

- HIGGI TRANSITION (HIGGI.ONDRE1):
For TYS departures or assigned by ATC only.
- HLRRY TRANSITION (HLRRY.ONDRE1)
- KTRYN TRANSITION (KTRYN.ONDRE1)
- PUPDG TRANSITION (PUPDG.ONDRE1)
- STRWY TRANSITION (STRWY.ONDRE1)

SE-4, 31 OCT 2024 to 28 NOV 2024

SE-4, 31 OCT 2024 to 28 NOV 2024