

WAAS CH 61299 W28A	APP CRS 275°	Rwy Idg TDZE 998 Apt Elev 1026	9000
--	------------------------	--	-------------

RNAV (GPS) Y RWY 28

HARTSFIELD/JACKSON ATLANTA INTL (ATL)

▽ For uncompensated Baro-VNAV systems, LNAV/VNAV NA below -7°C (20°F) or above 54°C (130°F). Simultaneous approach authorized with Rwy 26R or 26L or 27R, or Rwys 26R and 27R. DME/DME RNP-0.3 NA. LNAV procedure NA during simultaneous operations. Use of FD or AP providing RNAV track guidance required during simultaneous operations.

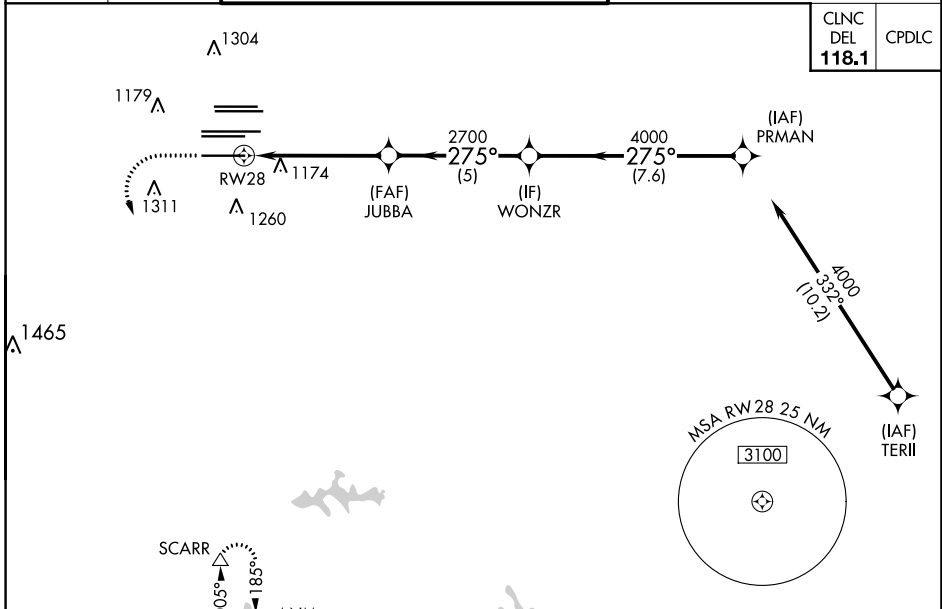
ALSF-2



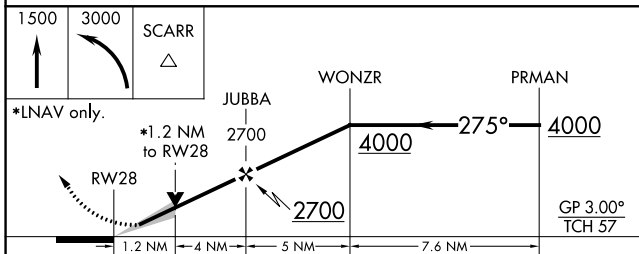
MISSED APPROACH:
Climb to 1500 then climbing left turn to 3000 direct SCARR and hold.

D-ATIS ARR 119.65	ATLANTA APP CON 127.9 379.9	ATLANTA TOWER 8L-26R 8R-26L 9L-27R 9R-27L 10-28 RWYS				ALL RWYS 121.9	GND CON (8L-26R,8R-26L) (9L-27R,9R-27L) 10-28	ALL RWYS 254.4
DEP 125.55	127.9 379.9	119.1 125.325	123.85	119.3 119.5	254.4	121.9	121.75 121.65	254.4

CINC DEL 118.1	CPDLC
-----------------------------	-------

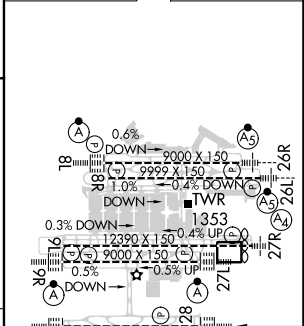


RADAR REQUIRED



CATEGORY	A	B	C	D
LPV DA		1198/18	200 (200-½)	
LNAV/VNAV DA		1250/24	252 (300-½)	
LNAV MDA	1440/24	442 (500-½)	1440/45	442 (500-¾)

ELEV 1026	D	TDZE 998
-----------	----------	----------



HIRL all Rwys
TDZ/CL Rwys 8L, 9R, 10, 26R,
27L and 28

SE-4, 31 OCT 2024 to 28 NOV 2024

SE-4, 31 OCT 2024 to 28 NOV 2024