

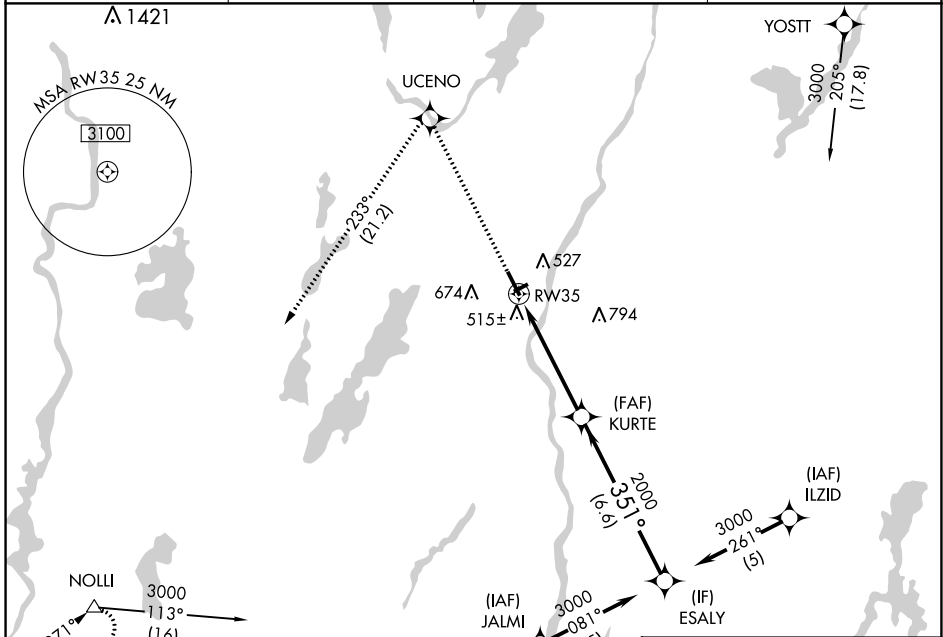
WAAS CH 70406 W35A	APP CRS 351°	Rwy Idg TDZE Apt Elev	5002 350 352
--	------------------------	-----------------------------	---

RNAV (GPS) RWY 35

AUGUSTA STATE (AUG)

RNP APCH.	MISSED APPROACH: Climb to 3000 direct UCENO and left turn on track 233° to NOLLI and hold.
<p>⚠ Circling to Rwy 26 NA at night. Rwy 35 helicopter visibility reduction below 3/4 SM NA. For uncompensated Baro-VNAV systems, LNAV/VNAV NA below -15°C or above 54°C.</p>	

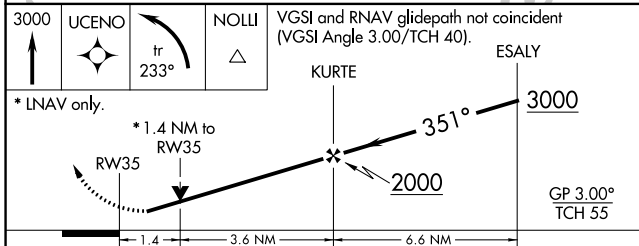
ASOS 118.325	PORTLAND APP CON * 128.35 299.2	CLNC DEL 119.95 299.2	UNICOM 123.0 (CTAF)
------------------------	---	---------------------------------	-------------------------------



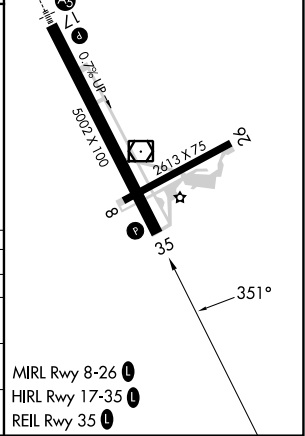
NE-1, 31 OCT 2024 to 28 NOV 2024

NE-1, 31 OCT 2024 to 28 NOV 2024

ELEV 352	D	TDZE 350
----------	---	----------



CATEGORY	A	B	C	D
LPV DA	610-1 260 (300-1)			
LNAV/VNAV DA	850-1 500 (500-1 3/4)			
LNAV MDA	840-1 490 (500-1)	840-1 490 (500-1 3/4)	840-1 490 (500-1 1/2)	840-1 490 (500-1 1/2)
CIRCLING	880-1 528 (600-1 3/4)	980-1 628 (700-1 3/4)	1160-2 808 (900-2 1/2)	



- MIRL Rwy 8-26
- HIRL Rwy 17-35
- REIL Rwy 35