

# TACAN RWY 3

TACAN COF Chan <b>97</b>	APCH CRS <b>020°</b>	Rwy Idg TDZE Arprt Elev <b>9008</b> <b>5</b> <b>8</b>
-----------------------------	-------------------------	--

[USAF]

PATRICK SFB (KCOF)

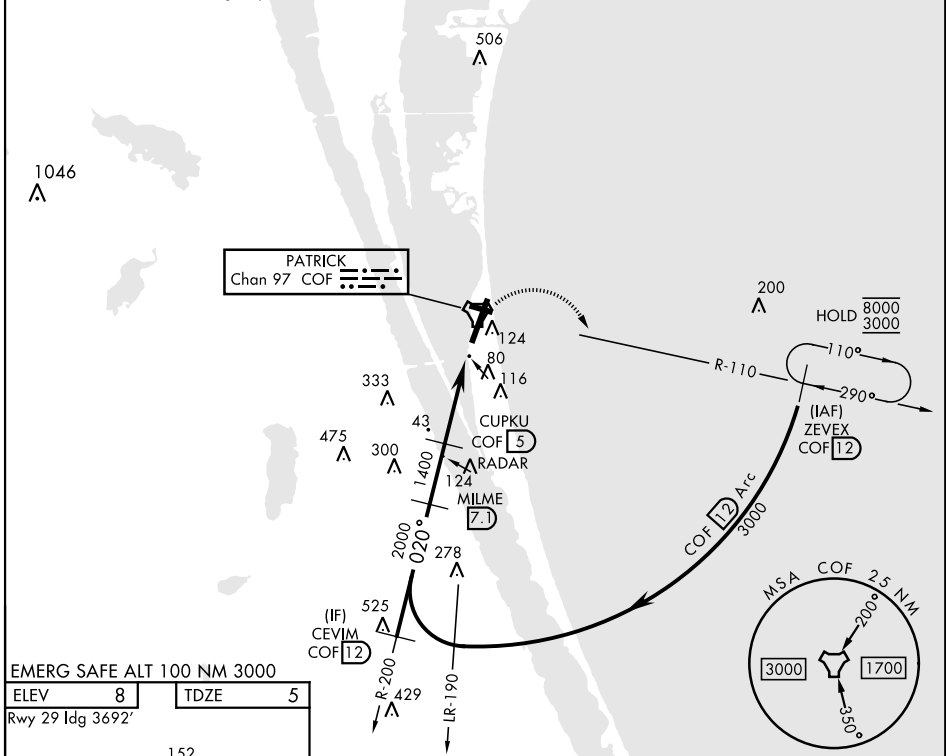
▼ \* When ALS inop, increase CAT AB RVR to 55 and vis to 1 mile, CAT CDE vis to 1 3/8 miles.  
 \*\* Circling not authorized NW of Rwy 3-21.



MISSED APPROACH: Climb to 600, then climbing right turn to 3000 and intercept COF TACAN R-110 to ZEVEX/12 DME and hold, continue climb in hold to 3000.

ATIS ★ <b>119.175 273.5</b>	ORLANDO APP CON ★ <b>132.65 281.425</b>	TOWER ★ <b>133.75 269.375</b>	GND CON ★ <b>124.35 335.8</b>	CLNC DEL ★ <b>118.4 289.4</b>
--------------------------------	--	----------------------------------	----------------------------------	----------------------------------

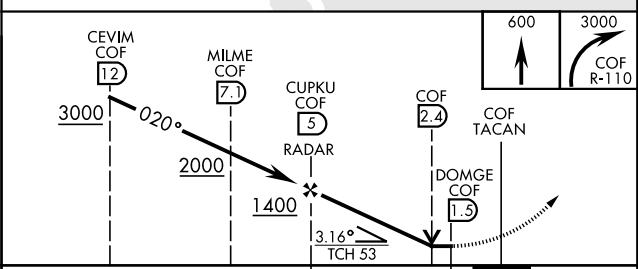
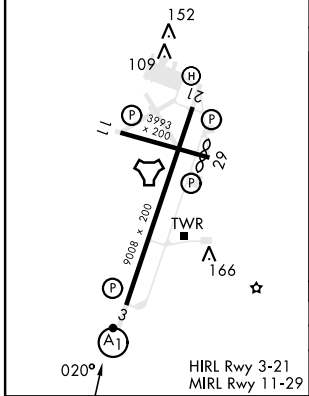
\*\* When circling to Rwy 29 at night, operational VGSI required, remain on or above VGSI glidepath until threshold.



EMERG SAFE ALT 100 NM 3000

ELEV <b>8</b>	TDZE <b>5</b>
---------------	---------------

Rwy 29 Idg 3692'



CATEGORY	A	B	C	D	E
S-03 *	520/24	515 (600-1/2)	520/55	515 (600-1)	
<input checked="" type="checkbox"/> CIRCLING	520-1	512 (600-1)	540-1 1/2 532 (600-1 1/2)	560-2 552 (600-2)	580-2 572 (600-2)

# TACAN RWY 3

SE-3, 31 OCT 2024 to 28 NOV 2024

SE-3, 31 OCT 2024 to 28 NOV 2024