

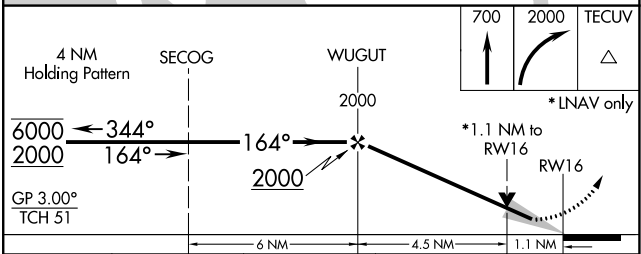
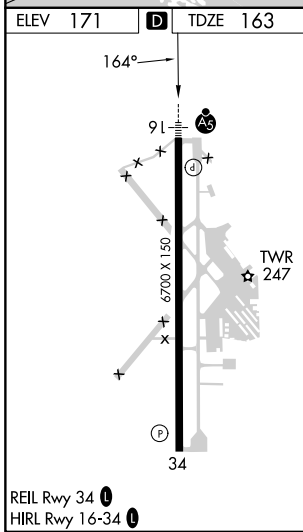
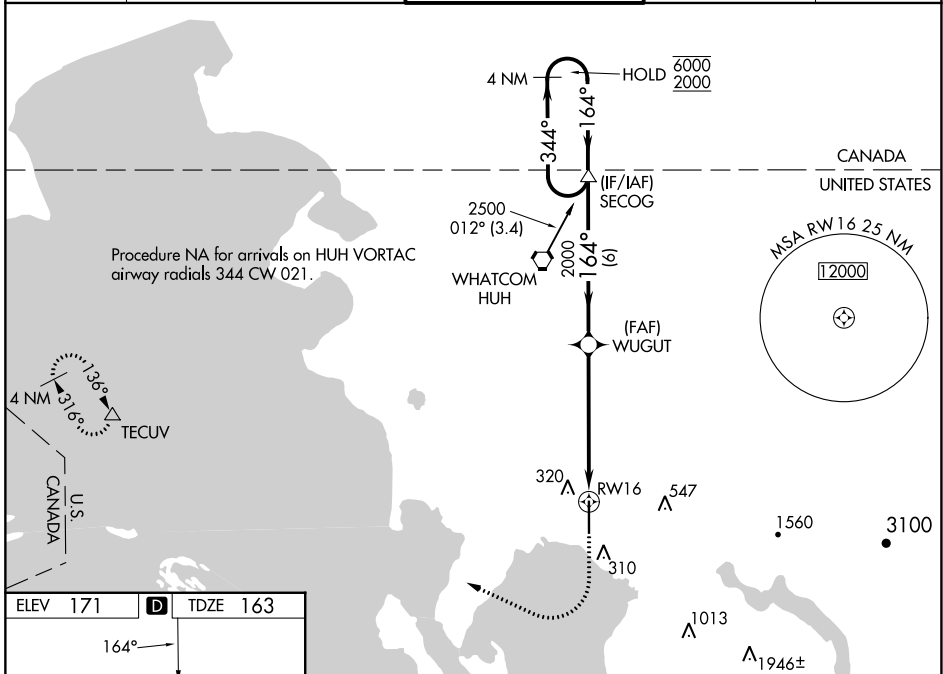
WAAS CH 45999 W16A	APP CRS 164°	Rwy Idg TDZE 163 Apt Elev 171
--	------------------------	---

RNAV (GPS) Y RWY 16

BELLINGHAM INTL (BLI)

RNP APCH. A For uncompensated Baro-VNAV systems, LNAV/VNAV NA below -10°C or above 54°C. #RVR 1800 authorized with use of FD or AP or HUD to DA.	MALSR 	MISSED APPROACH: Climb to 700 then climbing right turn to 2000 direct TECUV and hold.
---	-----------	--

ATIS 134.45	VICTORIA TERMINAL APP CON 132.7 290.8	BELLINGHAM TOWER * 124.9 (CTAF) 0 379.3	GND CON 127.4 379.3	UNICOM 122.95
-----------------------	---	---	-------------------------------	-------------------------



CATEGORY	A	B	C	D
LPV DA #		363/24	200 (200-½)	
LNAV/VNAV DA		491/30	328 (400-¾)	
LNAV MDA	560/24	397 (400-½)	560/35	397 (400-¾)
C CIRCLING	640-1	469 (500-1)	900-2 729 (800-2)	1160-3 989 (1000-3)

NW-1, 31 OCT 2024 to 28 NOV 2024

NW-1, 31 OCT 2024 to 28 NOV 2024