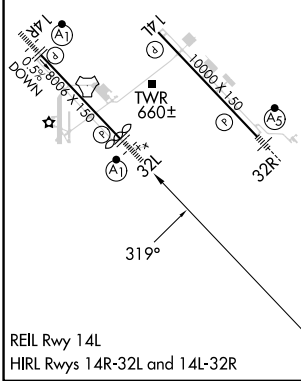
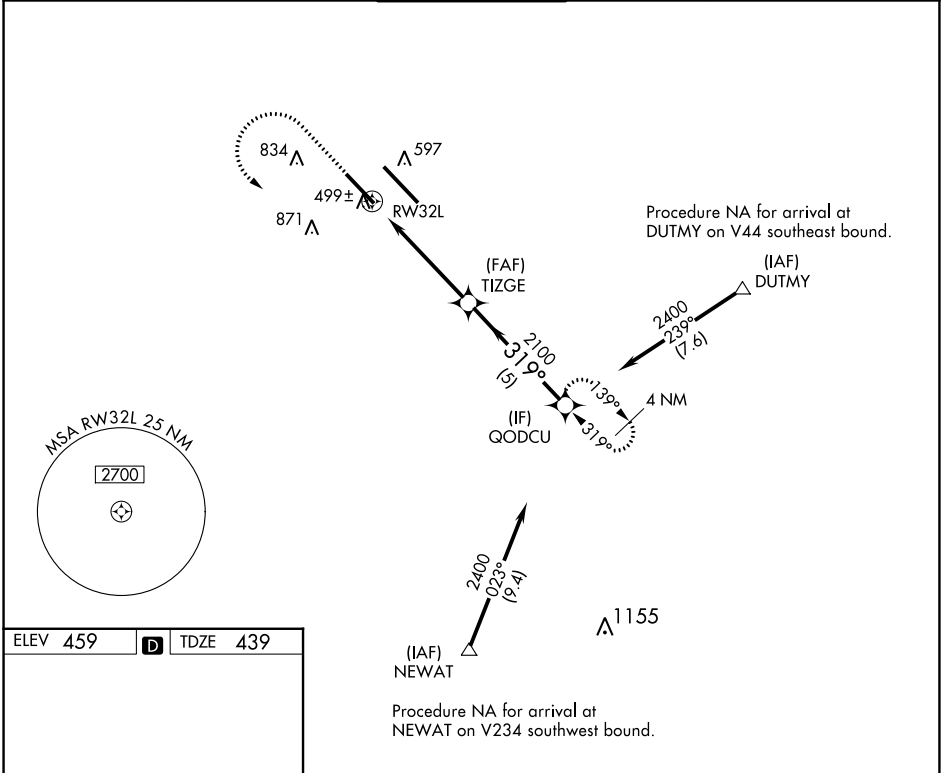


|                        |                        |
|------------------------|------------------------|
| APP CRS<br><b>319°</b> | Rwy Idg<br><b>7822</b> |
|                        | TDZE<br><b>439</b>     |
|                        | Apt Elev<br><b>459</b> |

# RNAV (GPS) RWY 32L

SCOTT AFB/MIDAMERICA ST LOUIS (BLV)

|   |  |                                    |   |                                    |  |
|---|--|------------------------------------|---|------------------------------------|--|
| RNP APCH-GPS.<br>▼ For inop ALS, increase LNAV Cat C/D visibility to 1 3/8 mile.<br>▲ ASR |  | ALSF-1<br>▲                        | MISSED APPROACH: Climb to 1500 then climbing left turn to 2400 direct QODCU and hold. |                                    |  |
| ATIS ★<br><b>128.7 256.7</b>  | ST LOUIS APP CON<br><b>125.2 281.5</b> | SCOTT TOWER<br><b>128.25 253.5</b> | GND CON<br><b>119.2 275.8</b>   | CLNC DEL<br><b>119.875 263.025</b> |  |



|                   |                       |                       |  |                               |
|-------------------|-----------------------|-----------------------|--|-------------------------------|
| ELEV 459          | <b>D</b>              | TDZE 439              |  |                               |
| 1500              | 2400                  | QODCU                 | VGSI and descent angles not coincident (VGSI Angle 3.00/TCH 50). |                               |
| RWY 32L           |                       | TIZGE                 | QODCU  |                               |
| 1.4 NM            | 3.7 NM                | 5 NM                  |  |                               |
| 1.4 NM to RW32L   |                       |                       |  |                               |
| 3.03° TCH 55      |                       |                       |  |                               |
| 319°              |                       |                       |  |                               |
| 1.4 NM            | 3.7 NM                | 5 NM                  |  |                               |
| CATEGORY          | A                     | B                     | C  | D                             |
| LNAV MDA          | 920/24                | 481 (500-1/2)         | 920/50   | 481 (500-1)                   |
| <b>C</b> CIRCLING | 1000-1<br>541 (600-1) | 1120-1<br>661 (700-1) | 1240-2 1/4<br>781 (800-2 1/4)                                    | 1240-2 1/2<br>781 (800-2 1/2) |

EC-3, 31 OCT 2024 to 28 NOV 2024

EC-3, 31 OCT 2024 to 28 NOV 2024