

CELTK SEVEN DEPARTURE (RNAV)

AL-58 (FAA)

BOSTON, MASSACHUSETTS

NE-1, 31 OCT 2024 to 28 NOV 2024

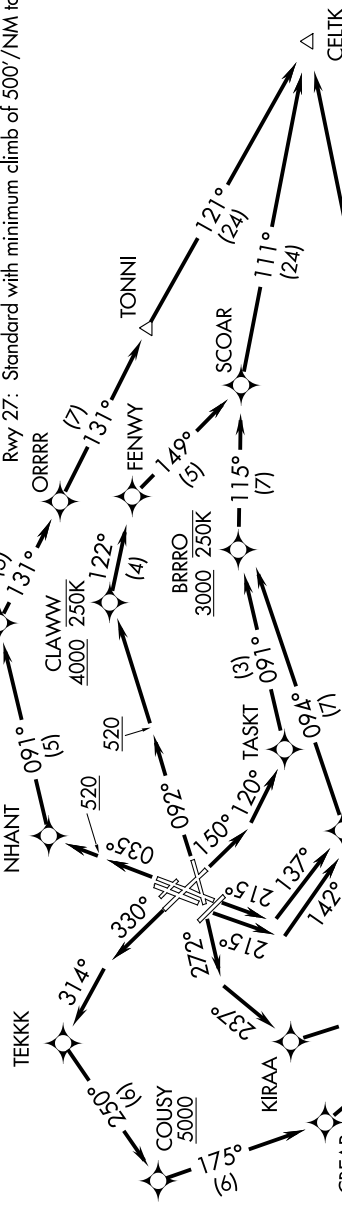
RNAV 1 - DME/DME/IRU or GPS.

RADAR required for non-GPS equipped aircraft.

BOSTON DEP CON
133.0
D-ATIS 135.0
CLNC DEL
121.65 257.8
CPDLC
GND CON
121.75 121.9
BOSTON TOWER
128.8 257.8 (WEST)
132.225 257.8 (EAST)

TEKKK
COUSY 5000
KIRAA
CBEAR
NHANT
HURBE 4000
CLAWW 4000 250K
FENNY
TONNI
SCOAR
TJAYY 1200 210K
COLYN

TAKEOFF MINIMUMS:
Rwy 4L, 14, 15L, 32, 33R: NA-ATC.
Rwy 4R, 9, 15R, 22R, 33L: Standard with minimum climb of 500'/NM to 520.
Rwy 22L: 300-1 with minimum climb of 500'/NM to 520, if tower reports no tall vessels in the departure area.
Rwy 27: Standard with minimum climb of 500'/NM to 1300.



△ FRILL

△ CELTK

N

TOP ALTITUDE:
5000

NOTE: Jet aircraft only.

NOTE: Chart not to scale.

(NARRATIVE ON FOLLOWING PAGE)

NE-1, 31 OCT 2024 to 28 NOV 2024

CELTK SEVEN DEPARTURE (RNAV)