

LOC/DME I-BOS 110.3 Chan 40	APP CRS 035°	Rwy Idg 8851 TDZE 18 Apt Elev 19
---	------------------------	---

ILS RWY 4R (CAT II & III)

GENERAL EDWARD LAWRENCE LOGAN INTL (BOS)

RNP APCH - GPS. From GOSHI.
DME required.

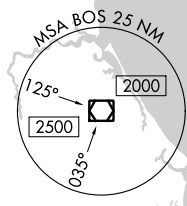
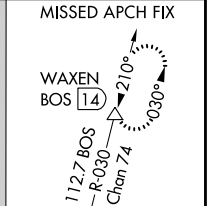
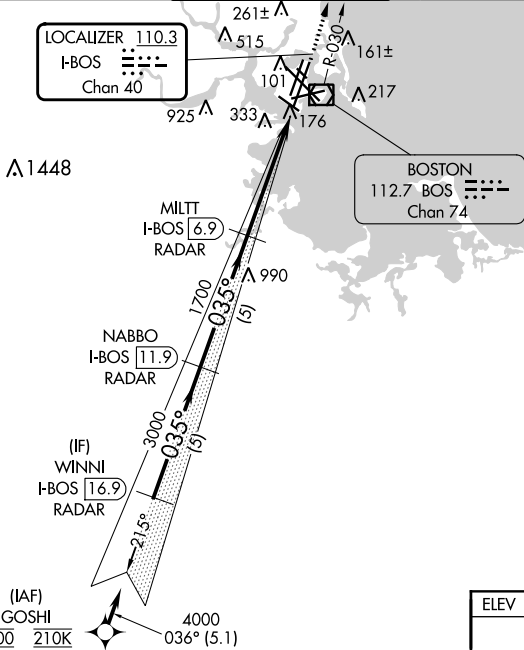
When control tower reports tall vessels in approach area, procedure NA. Simultaneous approach authorized. Simultaneous operations require use of vertical guidance; maintain last assigned altitude until established on glideslope. CAT II: RVR 1000 authorized with specific OPSPEC, MSPEC or LOA approval and use of Autoland or HUD to touchdown.

ALSf-2



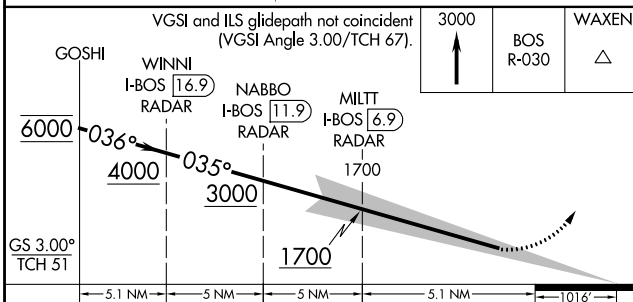
MISSED APPROACH: Climb to 3000 on BOS VOR/DME R-030 to WAXEN/BOS 14 DME and hold.

D-ATIS 135.0	BOSTON APP CON 120.6 263.1	BOSTON TOWER 128.8 257.8 (WEST) 132.225 257.8 (EAST)	GND CON 121.75 121.9	CLNC DEL 121.65 257.8	CPDLC
------------------------	--------------------------------------	--	--------------------------------	---------------------------------	-------

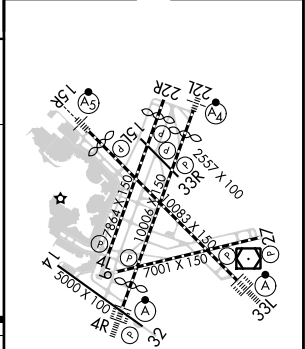


NE-1, 31 OCT 2024 to 28 NOV 2024

NE-1, 31 OCT 2024 to 28 NOV 2024



ELEV 19	TDZE 18
---------	---------



CATEGORY	A	B	C	D
S-ILS 4R	CAT II RA 99/12 100 DA 118			
S-ILS 4R	CAT III RVR 06			

CATEGORY II & III ILS - SPECIAL AIRCREW & AIRCRAFT CERTIFICATION REQUIRED

TDZ/CL Rwy 4R, 15R and 33L
REIL Rwy 4L, 27 and 32
MIRL Rwy 15L-33R
HIRL Rwy 4L-22R, 4R-22L, 9-27, 14-32 and 15R-33L