

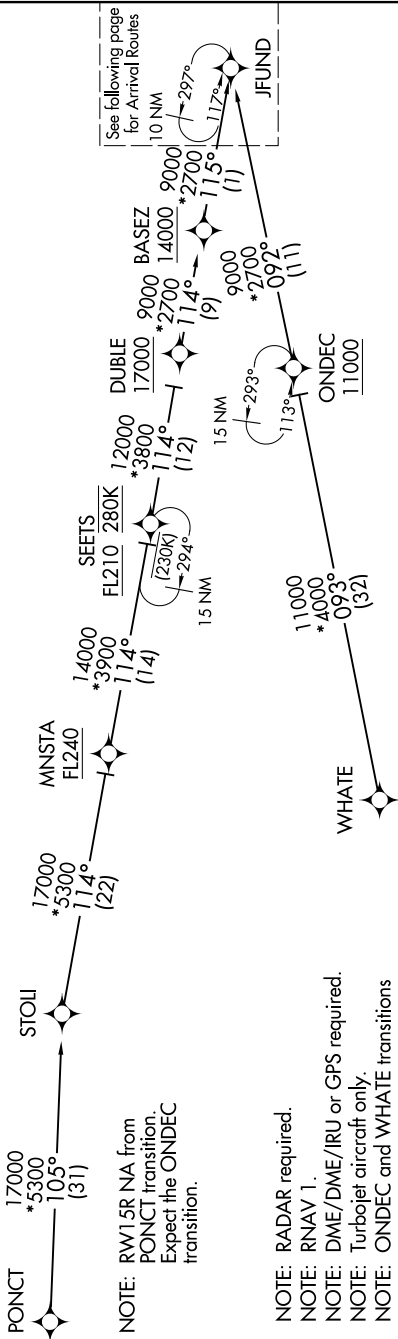
JFUND TWO ARRIVAL(RNAV) Transition Routes

AL-58 (FAA)

BOSTON, MASSACHUSETTS

NE-1, 31 OCT 2024 to 28 NOV 2024

D-ATIS
135.0
BOSTON APP CON
120.6 263.1



See following page
for Arrival Routes

NOTE: RW15R NA from
PUNCT transition.
Expect the ONDEC
transition.

- NOTE: RADAR required.
- NOTE: RNAV 1.
- NOTE: DME/DME/IRU or GPS required.
- NOTE: Turbojet aircraft only.
- NOTE: ONDEC and WHATE transitions assigned by ATC only.



ONDEC TRANSITION [ONDEC.JFUND2]:
PUNCT TRANSITION [PUNCT.JFUND2]
WHATE TRANSITION [WHATE.JFUND2]:

(CONTINUED ON FOLLOWING PAGE)

NOTE: Not to scale.

NE-1, 31 OCT 2024 to 28 NOV 2024

JFUND TWO ARRIVAL(RNAV) Transition Routes

BOSTON, MASSACHUSETTS