

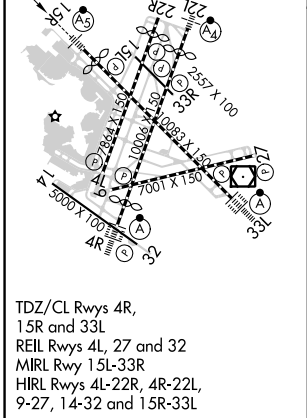
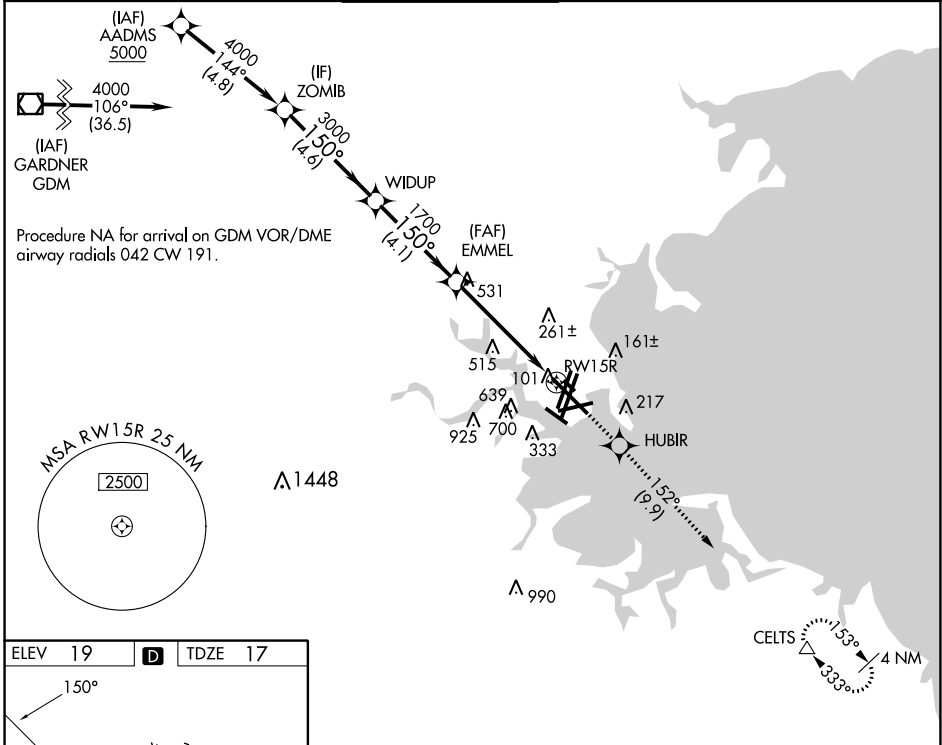
WAAS CH 42925 W15A	APP CRS 150°	Rwy ldg TDZE Apt Elev	9201 17 19
----------------------------------------	------------------------	-----------------------------	---------------------------------------

RNAV (GPS) RWY 15R

GENERAL EDWARD LAWRENCE LOGAN INTL (BOS)

RNP APCH - GPS.	MALSR	MISSED APPROACH: Climb to 3000 direct HUBIR and on track 152° to CELTS and hold.
<p>▼ For uncompensated Baro-VNAV systems, LNAV/VNAV NA below -15°C or above 54°C. For inop ALS, increase LNAV Cats C and D visibility to 1 3/8 SM.</p>		

D-ATIS 135.0	BOSTON APP CON 120.6 263.1	BOSTON TOWER 128.8 257.8 (WEST) 132.225 257.8 (EAST)	GND CON 121.75 121.9	CLNC DEL 121.65 257.8	CPDLC
------------------------	--------------------------------------	--------------------------------------------------------------------------	--------------------------------	---------------------------------	-------



ELEV 19		D	TDZE 17	
VGSi and RNAV glidepath not coincident (VGSi Angle 3.00/TCH 71).				
ZOMB		3000	HUBIR	CELTS
4000		150°	↑	△
WIDUP		3000	☆	tr 152°
EMMEL		1700		
1700		1.7 NM to RW15R		
GP 3.00°		4.6 NM	3.5 NM	1.7 NM
TCH 60		4.1 NM		
CATEGORY	A	B	C	D
LPV DA		217/18	200 (200-1/2)	
LNAV/VNAV DA		567-1 1/8	550 (600-1 1/8)	
LNAV MDA	620/24	603 (700-1/2)	620-1 3/8	603 (700-1 3/8)

NE-1, 31 OCT 2024 to 28 NOV 2024

NE-1, 31 OCT 2024 to 28 NOV 2024