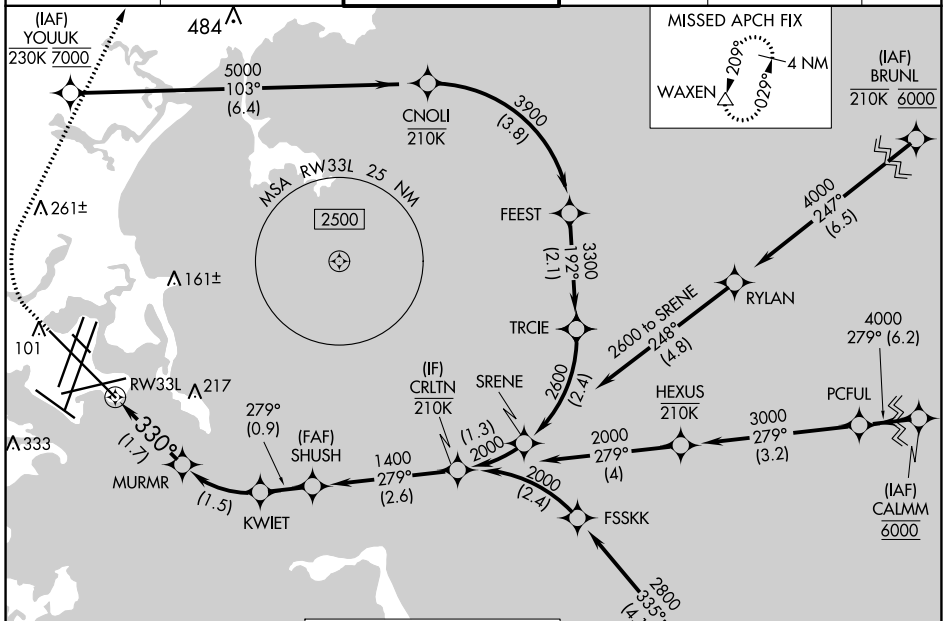


APP CRS	Rwy ldg	10083
330°	TDZE	16
	Apt Elev	19

RNAV (RNP) X RWY 33L

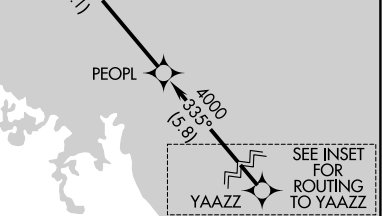
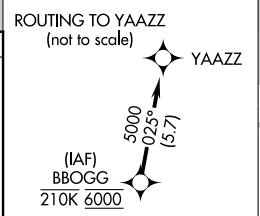
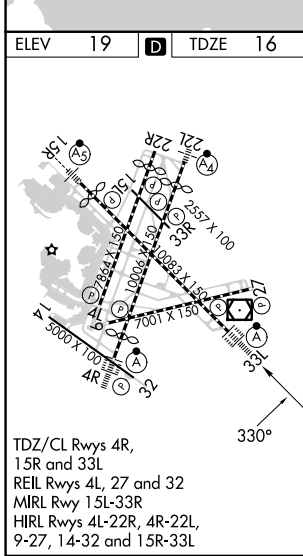
GENERAL EDWARD LAWRENCE LOGAN INTL (BOS)

RNP AR APCH. RF required.		ALSF-2		MISSED APPROACH: Climb to 600 then climbing right turn to 3000 direct WAXEN and hold.	
⚠ For uncompensated Baro-VNAV systems, procedure NA below -14°C or above 54°C. For inop ALS, increase RNP 0.30 all Cnts visibility to RVR 4000.					
D-ATIS	BOSTON APP CON	BOSTON TOWER	GND CON	CLNC DEL	CPDLC
135.0	120.6 263.1	128.8 257.8 (WEST) 132.225 257.8 (EAST)	121.75 121.9	121.65 257.8	



NE-1, 31 OCT 2024 to 28 NOV 2024

NE-1, 31 OCT 2024 to 28 NOV 2024



VGSI and RNAV glidepath not coincident (VGSI Angle 3.00/TCH 68).

CRLTN	SHUSH	KWJET	MURMR	WAXEN
2000	1400	1099	612	600 3000
GP 3.00°	1400		330°	
TCH 52				
← 2.6 NM		← 0.9 NM		← 1.5 NM
← 1.7 NM				
CATEGORY	A	B	C	D
RNP 0.30 DA	273/24		257 (300-½)	

AUTHORIZATION REQUIRED