

BUFFALO, NEW YORK

AL-65 (FAA)

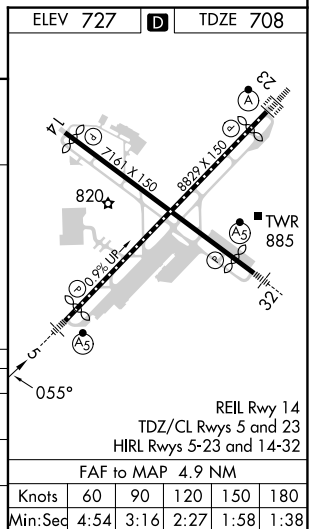
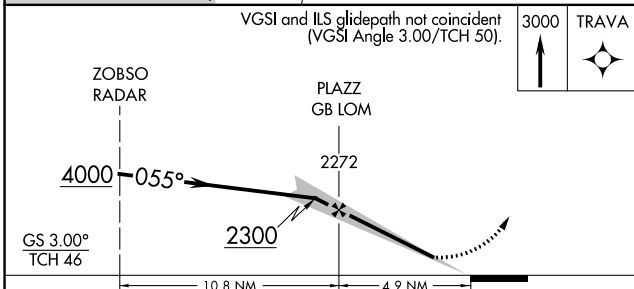
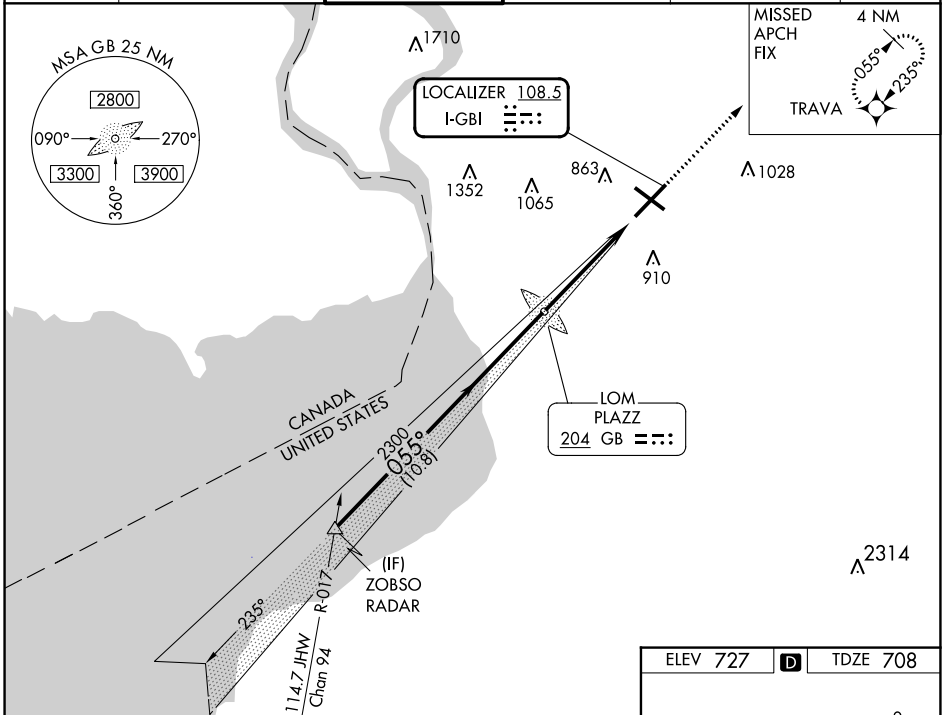
24305

LOC I-GBI <b>108.5</b>	APP CRS <b>055°</b>	Rwy Idg TDZE Apt Elev	<b>7569</b> <b>708</b> <b>727</b>
---------------------------	------------------------	-----------------------------	---

# ILS or LOC RWY 5

BUFFALO NIAGARA INTL (BUF)

RADAR required for procedure entry. RNP APCH - GPS. ADF required for LOC only.				MALSR	MISSED APPROACH: Climb to 3000 direct TRAVA and hold.
Autopilot coupled approach NA. For inop ALS, increase S-LOC 5 Cats C and D visibility to RVR 5500.					
D-ATIS <b>135.35</b>	BUFFALO APP CON <b>126.15 263.125</b>	BUFFALO TOWER <b>120.5 257.8</b>	GND CON <b>133.2 257.8</b>	CLNC DEL <b>124.7 257.8</b>	CPDLC



CATEGORY	A	B	C	D
S-ILS 5	908/18 200 (200-1/2)			
S-LOC 5	1060/24	352 (400-1/2)	1060/30	352 (400-5/8)
<b>C</b> CIRCLING	1200-1	473 (500-1)	1220-1 1/2	1340-2
			493 (500-1/2)	613 (700-2)

BUFFALO, NEW YORK  
Amdt 18 02DEC21

42°56'N-78°44'W

# BUFFALO NIAGARA INTL (BUF)

## ILS or LOC RWY 5

NE-2, 31 OCT 2024 to 28 NOV 2024

NE-2, 31 OCT 2024 to 28 NOV 2024