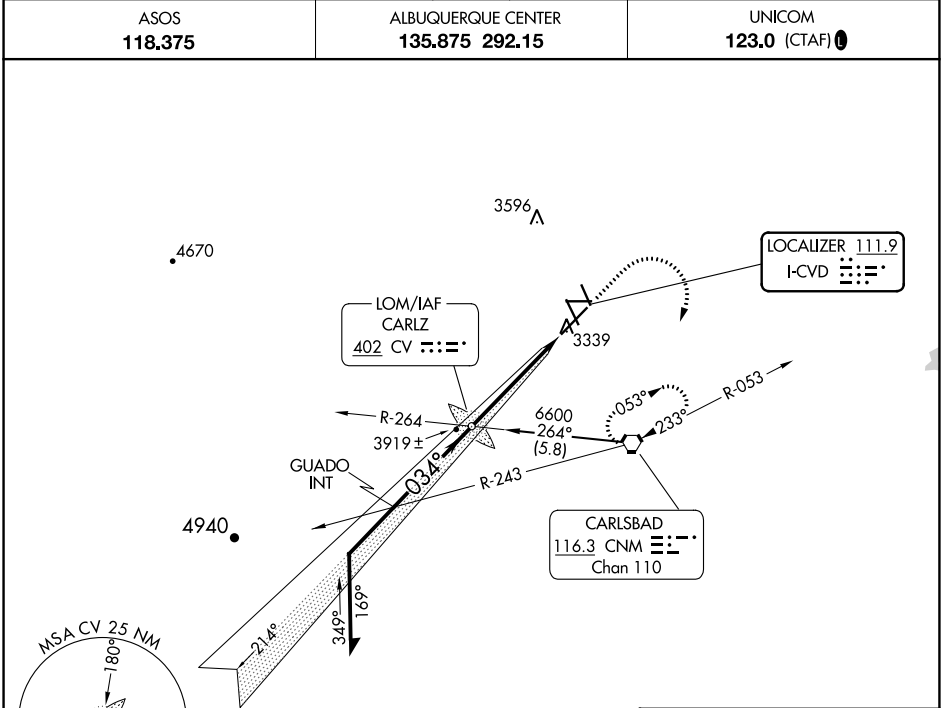


LOC I-CVD <b>111.9</b>	APP CRS <b>034°</b>	Rwy Idg 7504 TDZE 3295 Apt Elev 3295
---------------------------	------------------------	---

# ILS RWY 3

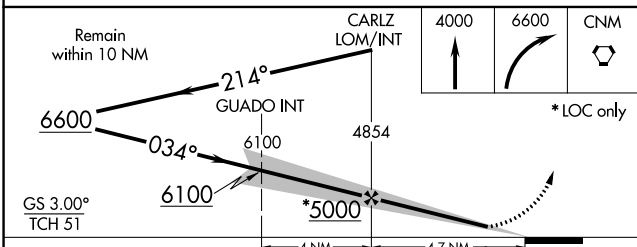
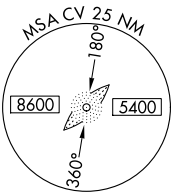
CAVERN CITY AIR TRML (CNM)

	MALSR	MISSED APPROACH: Climb to 4000 then climbing right turn to 6600 direct CNM VORTAC and hold.
	ASOS <b>118.375</b>	ALBUQUERQUE CENTER <b>135.875 292.15</b>



SW-1, 31 OCT 2024 to 28 NOV 2024

SW-1, 31 OCT 2024 to 28 NOV 2024



ELEV 3295	D	TDZE 3295			
MIRL Rwys 3-21, 8-26, and 14R-32L					
FAF to MAP 4.7 NM					
Knots	60	90	120	150	180
Min:Sec	4:42	3:08	2:21	1:53	1:34

CATEGORY	A	B	C	D
S-ILS 3	3495-½		200 (200-½)	
S-LOC 3	3940-½	645 (700-½)	3940-1¼ 645 (700-1¼)	3940-1½ 645 (700-1½)
CIRCLING	3940-1	645 (700-1)	3960-1⅜ 665 (700-1⅜)	4260-3 965 (1000-3)