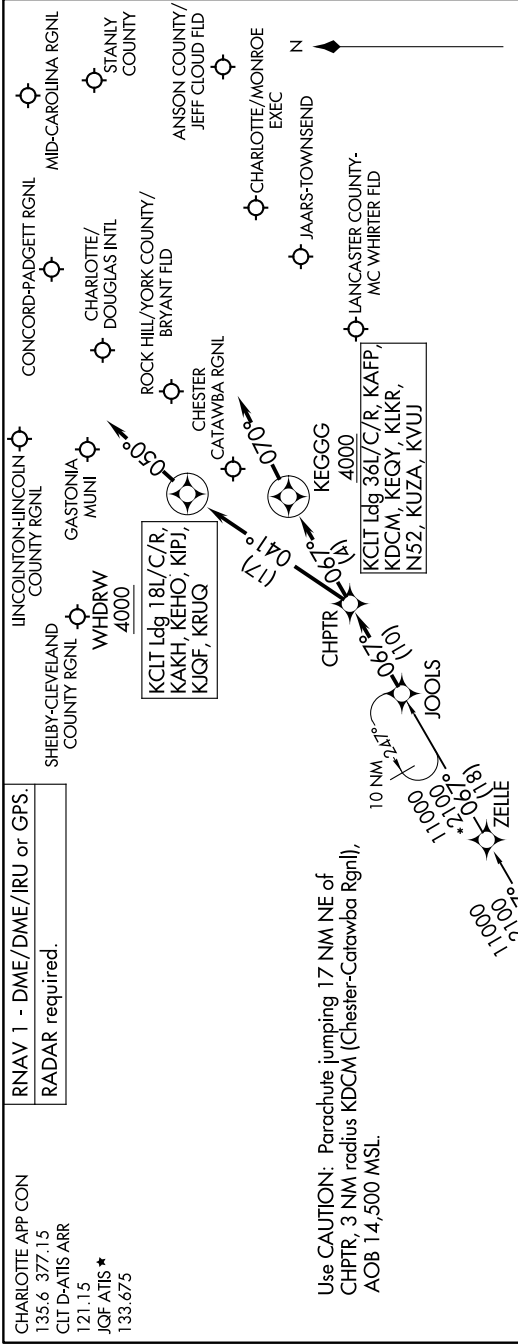


# JOOLS ONE ARRIVAL (RNAV)

CHARLOTTE, NORTH CAROLINA

SE-2, 31 OCT 2024 to 28 NOV 2024



**ARRIVAL ROUTE DESCRIPTION**

**THRSR TRANSITION (THRSR..JOOLS1)**  
**WANSA TRANSITION (WANSA..JOOLS1)**

**KCLT:** From JOOLS on track 067° to CHPTR.  
**LANDING RUNWAYS 18L/C/R:** From CHPTR on track 041° to cross WHDRW at or above 4000, then on track 050°. Expect RADAR vectors to final approach course.  
**LANDING RUNWAYS 36L/C/R:** From CHPTR on track 067° to cross KEGGG at or above 4000, then on track 070°. Expect RADAR vectors to final approach course.  
**LANDING KAKH/KRUQ/KEHO/KIQF/KIPJ:** From JOOLS on track 067° to CHPTR, then on track 041° to cross WHDRW at or above 4000, then on track 050°. Expect RADAR vectors to final approach course.  
**LANDING KDCM/KEGY/KUZA/KAFF/N52/KVUJ/KLKR:** From JOOLS on track 067° to CHPTR, then on track 067° to cross KEGGG at or above 4000, then on track 070°. Expect RADAR vectors to final approach course.

SE-2, 31 OCT 2024 to 28 NOV 2024

# JOOLS ONE ARRIVAL (RNAV)

CHARLOTTE, NORTH CAROLINA

NOTE: Chart not to scale.