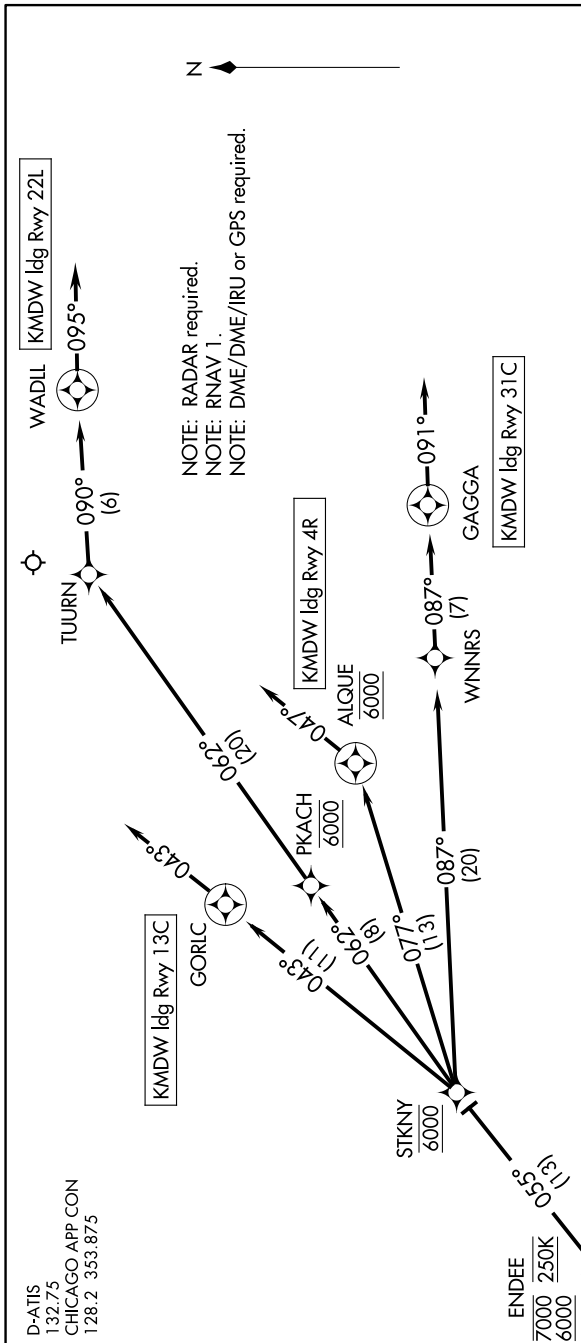


ENDEE SIX ARRIVAL (RNAV) Arrival Routes

EC-3, 31 OCT 2024 to 28 NOV 2024



ARRIVAL ROUTE DESCRIPTION

From ENDEE on track 055° to cross STKNY at 6000.

LANDING RWY 4R: From STKNY on track 077° to cross ALQUE at 6000, then on track 047°.

Expect ILS or LOC RWY 4R approach or RADAR vectors to final approach course.

LANDING RWY 13C: From STKNY on track 043° to GORLIC, then on track 043°.

Expect RADAR vectors to final approach course.

LANDING RWY 22L: From STKNY on track 062° to cross PKACH at 6000, then on track 062° to TUURN, then on track 090° to WADIL, then on track 095°. Expect RADAR vectors to final approach course.

LANDING RWY 31C: From STKNY on track 087° to WNNRS, then on track 087° to GAGGA, then on track 091°.

Expect RADAR vectors to final approach course.

D-ATIS
132.75
CHICAGO APP CON
128.2 353.875

NOTE: Chart not to scale.

EC-3, 31 OCT 2024 to 28 NOV 2024

ENDEE SIX ARRIVAL (RNAV) Arrival Routes