

LOC/DME I-HKH <b>111.5</b> Chan <b>52</b>	APP CRS <b>047°</b>	Rwy Idg TDZE <b>619</b> Apt Elev <b>620</b>
---	------------------------	---

# ILS or LOC RWY 4R

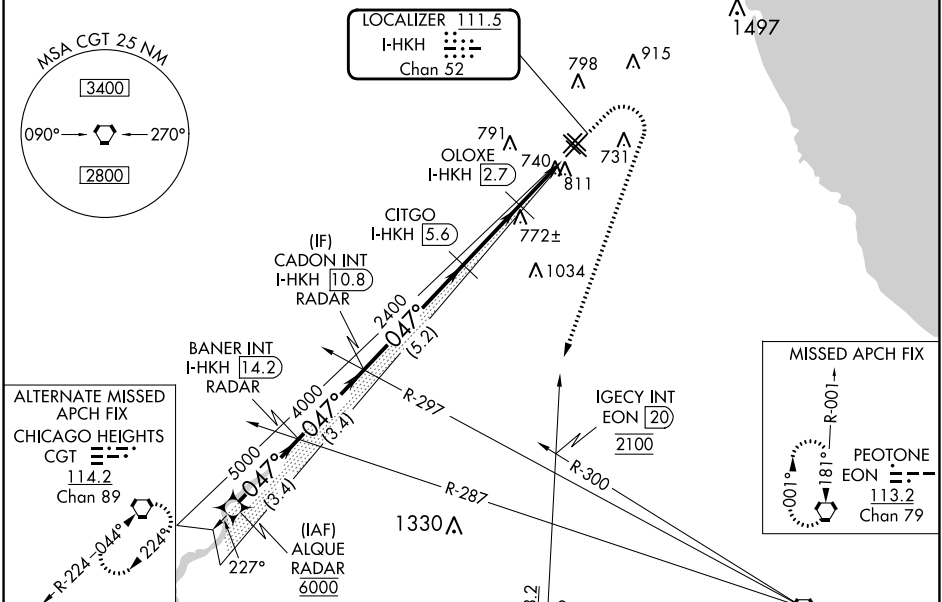
CHICAGO MIDWAY INTL (MDW)

RNAV 1-GPS or RADAR required for procedure entry.  
DME required for LOC only.

- ▼ Circling Rwy 31R NA at night.
- ▲ Rwy 4R helicopter visibility reduction below RVR 4000 NA.

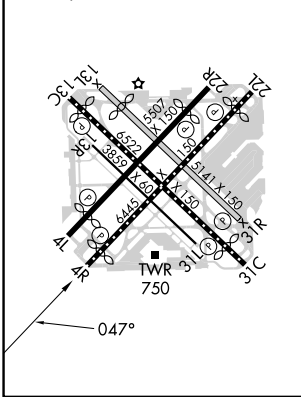
MISSED APPROACH: Climb to 1100 then climbing right turn to 2100 on heading 230° and on EON VORTAC R-001 until crossing IGEVY INT/EON 20 DME, then climb to 2600 to EON VORTAC and hold.

D-ATIS <b>132.75</b>	CHICAGO APP CON <b>128.2 353.875</b>	MIDWAY TOWER <b>135.2 269.125</b>	GND CON <b>118.075</b>	CLNC DEL <b>124.625</b>	CPDLC
-------------------------	---	--------------------------------------	---------------------------	----------------------------	-------



ELEV 620	<b>D</b>	TDZE 619
----------	----------	----------

HIRL Rws 4R-22L and 13C-31C  
MIRL Rws 4L-22R, 13L-31R, and 13R-31L  
REIL Rws 4R, 22L, and 31C  
RLS Rws 13C and 31C



VGSI and ILS glidepath not coincident (VGSI Angle 3.00/TCH 66).

ALQUE RADAR	BANER INT I-HKH 14.2	CADON INT I-HKH 10.8	CITGO I-HKH 5.6	OLOXE I-HKH 2.7	*I-HKH 1.2	I-HKH 0.2	
6000	5000	4000	2400	2100	1100	2600	
GS 3.00°	3.4 NM	3.4 NM	5.2 NM	2.9 NM	1.5 NM	1 NM	
TCH 50	*LOC only						
CATEGORY	A		B		C		D
S-ILS 4R	869/40 250 (300-¾)		869/50 250 (300-1)				
S-LOC 4R	1000/55 381 (400-1)		1000/60 381 (400-1¼)				
<b>C</b> CIRCLING	1120-1 500 (500-1)		1340-2 720 (800-2)		1340-2¼ 720 (800-2¼)		

EC-3, 31 OCT 2024 to 28 NOV 2024

EC-3, 31 OCT 2024 to 28 NOV 2024