

CHICAGO APP CON 128.2 353.875 D-ATIS 132.75	RNAV 1-DME/DME/IRU or GPS. RADAR required.
--	---



ARRIVAL ROUTE DESCRIPTION

BAGEL TRANSITION (BAGEL.PANGG5)
FORT WAYNE TRANSITION (FWA.PANGG5)
LITCH TRANSITION (LITCH.PANGG5)

From PANGG on track 274° to MEGGZ, then on track 274° to cross AWSUM at 10000, then on track 273° to IROCK, then on track 273° to cross HALIE at 6000.

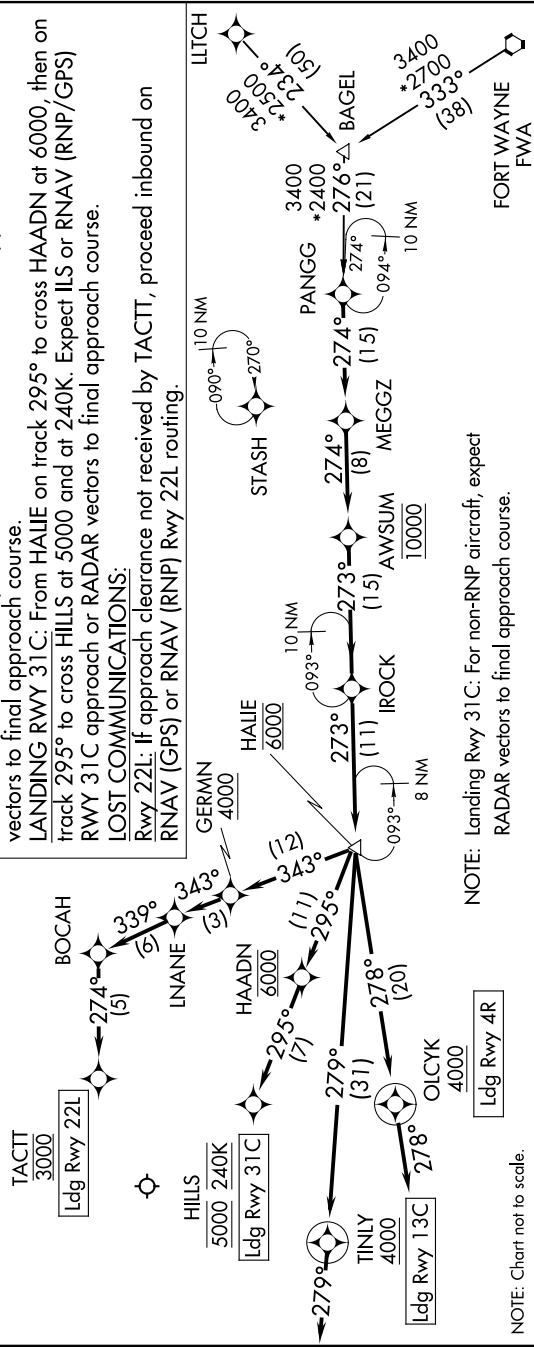
LANDING RWY 4R: From HALIE on track 278° to cross OLCYK at or above 4000, then on track 278°. Expect RADAR vectors to final approach course.

LANDING RWY 13C: From HALIE on track 279° to cross TINLY at or above 4000, then on track 279°. Expect RADAR vectors to final approach course.

LANDING RWY 22L: From HALIE on track 343° to cross GERMN at or above 4000, then on track 343° to LNAME, then on track 339° to BOCAH, then on track 274° to cross TACTT at 3000. Expect RNAV (RNP/GPS) RWY 22L approach or RADAR vectors to final approach course.

LANDING RWY 31C: From HALIE on track 295° to cross HAADN at 6000, then on track 295° to cross HILLS at 5000 and at 240K. Expect ILS or RNAV (RNP/GPS) RWY 31C approach or RADAR vectors to final approach course.

LOST COMMUNICATIONS:
RWY 22L: If approach clearance not received by TACTT, proceed inbound on RNAV (GPS) or RNAV (RNP) RWY 22L routing.



NOTE: Landing Rwy 31C: For non-RNP aircraft, expect RADAR vectors to final approach course.