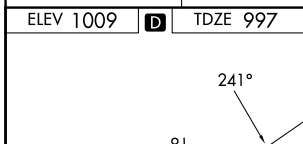
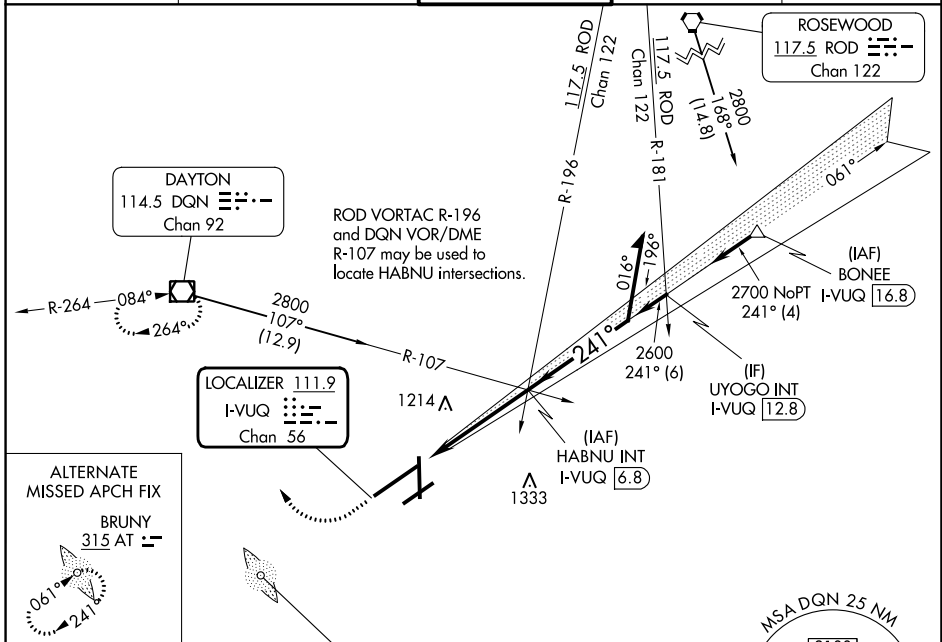


LOC/DME I-VUG 111.9 Chan 56	APP CRS 241°	Rwy Idg 10900 TDZE 997 Apt Elev 1009
---	------------------------	---

I LS or LOC RWY 24R

JAMES M COX DAYTON INTL (DAY)

<p>Simultaneous approach authorized. For inop ALS, increase S-LOC 24R Cat C/D visibility to RVR 6000.</p>		<p>MALSR</p>	<p>MISSED APPROACH: Climb to 3000 then right turn direct DQN VOR/DME and hold.</p>	
ATIS 125.8	COLUMBUS APP CON 134.45 323.15	DAYTON TOWER 119.9 257.7	GND CON 121.9	CLNC DEL 121.75



3000	DQN	HABNU INT I-VUG 6.8			Remain within 10 NM
		<p>2600</p> <p>061°</p> <p>2800</p> <p>241°</p> <p>2600</p> <p>GS 3.00° TCH 55</p> <p>1.1 NM 3.8 NM</p>			
CATEGORY	A	B	C	D	
S-ILS 24R	1203/24		206 (200-½)		
S-LOC 24R	1400/24	403 (400-½)	1400/40	403 (400-¾)	
CIRCLING	1580-1	571 (600-1)	1580-1½	1640-2 571 (600-1½) 631 (700-2)	

EC-2, 31 OCT 2024 to 28 NOV 2024

EC-2, 31 OCT 2024 to 28 NOV 2024