

DAYTON, OHIO

# RNAV (GPS) RWY 23L

24305

APCH CRS	Rwy Idg	7000
233°	TDZE	818
	Arpt Elev	823

(USAF)

WRIGHT PATTERSON AFB (KFFO)

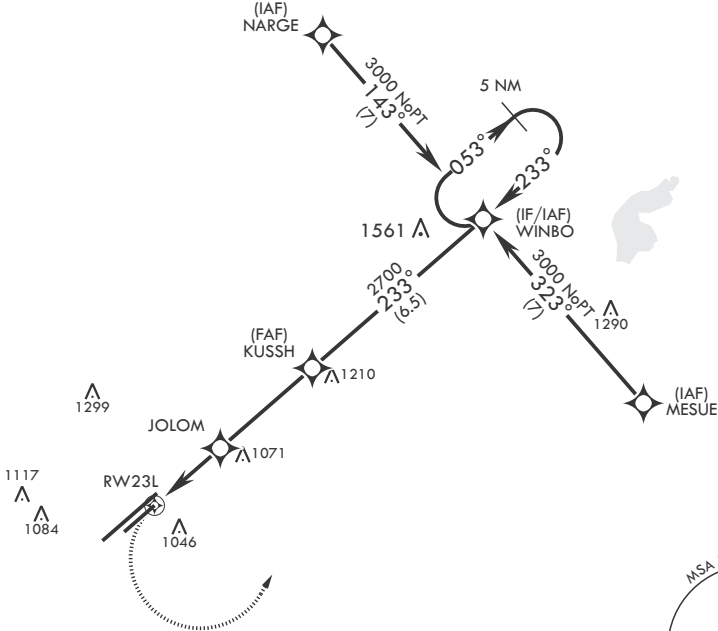
**▼** \* When Rwy 23R VGSi inop, circling to Rwy 23R NA at night. MISSED APPROACH: Turn left climb to 3000 direct WINBO WPT and hold.

ATIS <b>124.475 269.9</b>	COLUMBUS APP CON/DEP CON <b>118.85 269.275</b>	PATTERSON TOWER <b>127.8 281.45</b>	GND CON <b>121.8 335.8</b>
------------------------------	---	--	-------------------------------

DME/DME RNP -0.3 NA

LNAV Visibility Reduction by Helicopters NA.

1323



EMERG SAFE ALT 100 NM 3300

WINBO VGSi and descent angle not coincident.	5 NM Holding Pattern WINBO 3000 053° / 233°				ELEV 823	TDZE 818
	KUSSH 2700 JOLOM 1620 1.4 NM to RWY 23L $\leq 2.88^\circ$ TCH 50 2.5 NM / 3.5 NM					
CATEGORY	A	B	C	D		
LNAV MDA	1320-1	502 (500-1)	1320-1 $\frac{3}{8}$	502 (500-1 $\frac{1}{2}$ )		
<b>C</b> CIRCLING*	1380-1 557 (600-1)	1440-1 617 (700-1)	1560-2 737 (800-2)	1620-2 $\frac{1}{2}$ 797 (800-2 $\frac{1}{2}$ )	HIRL Rwy 5L-23R MIRL Rwy 5R-23L	

DAYTON, OHIO

39°50'N - 84°03'W

WRIGHT PATTERSON AFB (KFFO)

Amdt 6 29MAR18

# RNAV (GPS) RWY 23L

EC-2, 31 OCT 2024 to 28 NOV 2024

EC-2, 31 OCT 2024 to 28 NOV 2024