

DAYTON, OHIO

RNAV (GPS) RWY 23R

24305

APCH CRS	Rwy Idg	12,600
233°	TDZE	823
	Arprt Elev	823

- (USAF)

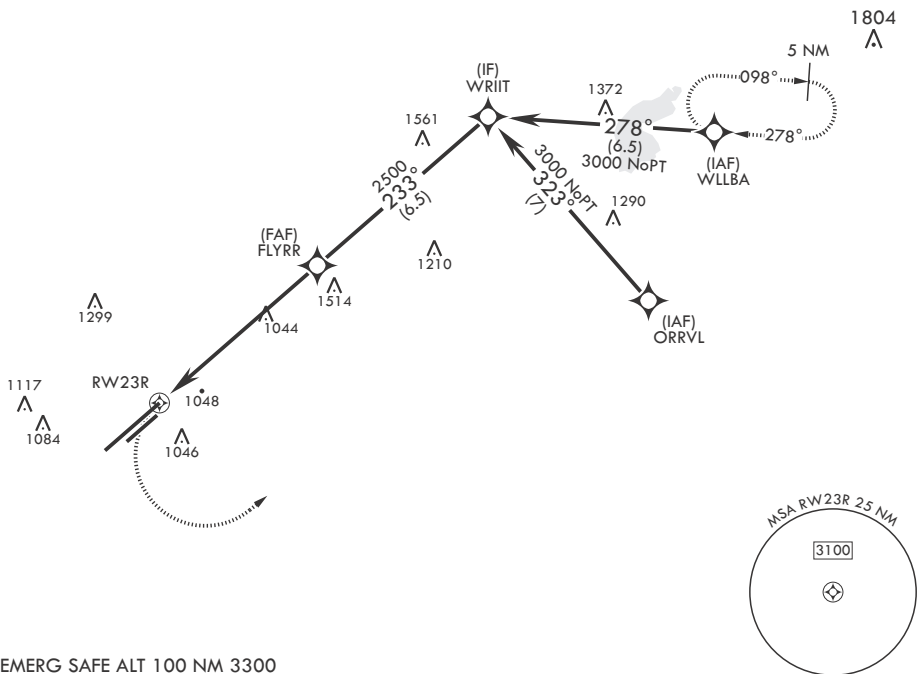
WRIGHT PATTERSON AFB (KFFO)

ALS-1 MISSED APPROACH: Turn left climb to 3000 direct WLLBA waypoint and hold.
 * When ALS inop, increase CAT AB RVR to 55, vis to 1 mile; CAT CD vis to 1 3/8 miles.
 ** When Rwy 23R VGSI inop, circling to Rwy 23R NA at night.

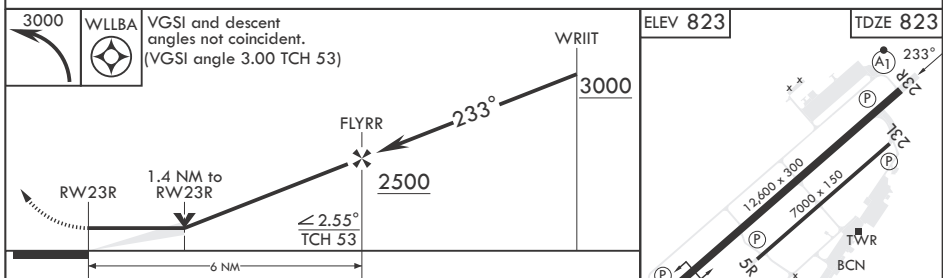
ATIS 124.475 269.9	COLUMBUS APP CON/DEP CON 118.85 269.275	PATTERSON TOWER 127.8 281.45	GND CON 121.8 335.8
-----------------------	--	---------------------------------	------------------------

DME/DME RNP-0.3 NA

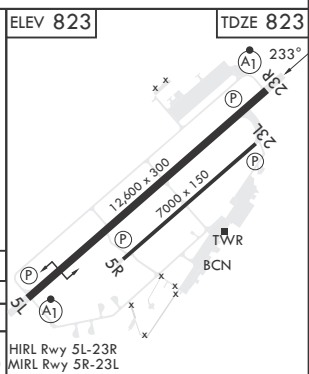
1323



EMERG SAFE ALT 100 NM 3300



CATEGORY	A	B	C	D
LNAV MDA*	1320/24 497 (500-½)	1320/50 497 (500-1)		
CIRCLING**	1380-1 557 (600-1)	1440-1 617 (700-1)	1560-2 737 (800-2)	1620-2½ 797 (800-2½)



DAYTON, OHIO

39°50'N - 84°03'W

WRIGHT PATTERSON AFB (KFFO)

Amdt 5 13OCT16

RNAV (GPS) RWY 23R

EC-2, 31 OCT 2024 to 28 NOV 2024

EC-2, 31 OCT 2024 to 28 NOV 2024