

DAYTON, OHIO

# RNAV (GPS) RWY 5R

APCH CRS	Rwy Idg	<b>7000</b>
<b>053°</b>	TDZE	<b>813</b>
	Arprt Elev	<b>823</b>

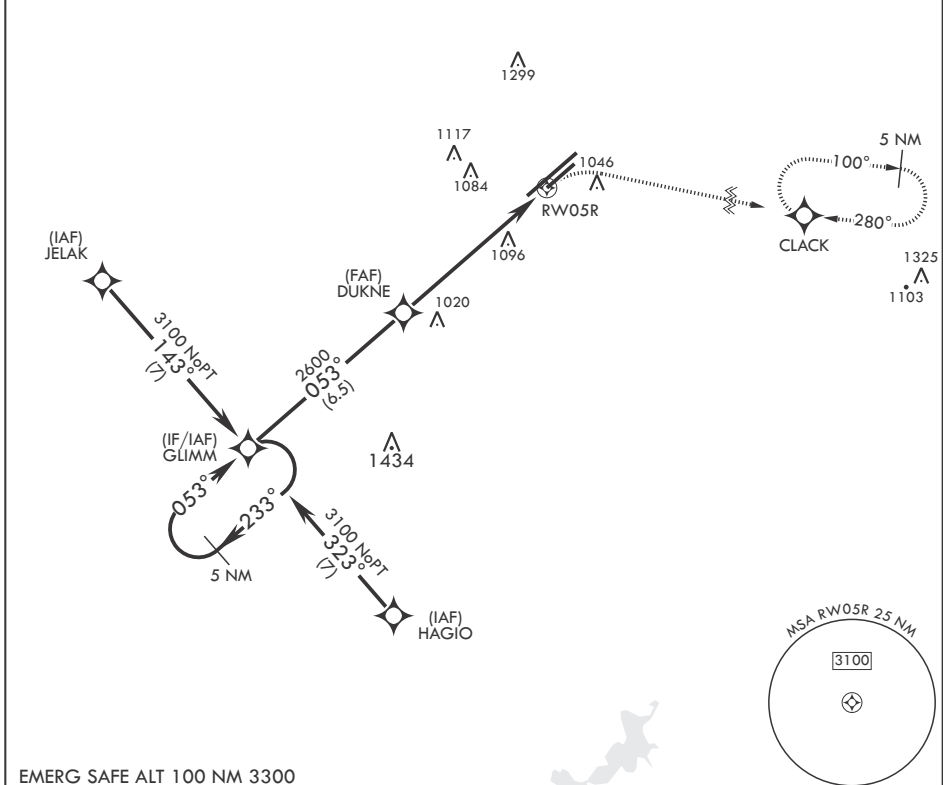
-(USAF)

WRIGHT PATTERSON AFB (KFFO)

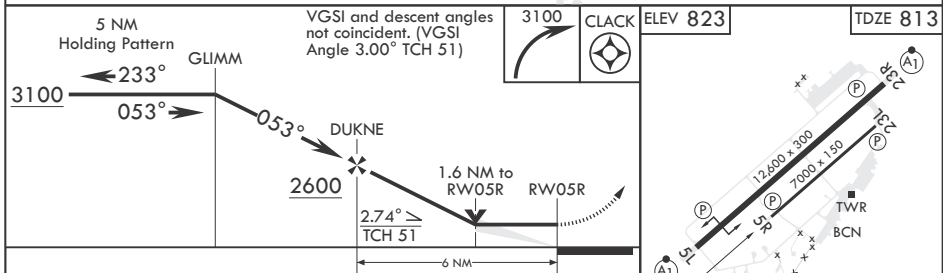
**▼** \* When Rwy 23R VGSi inop, circling to Rwy 23R NA at night. MISSED APPROACH: Turn right climb to 3100 direct CLACK WPT and hold.

ATIS <b>124.475 269.9</b>	COLUMBUS APP CON/DEP CON <b>118.85 269.275</b>	PATTERSON TOWER <b>127.8 281.45</b>	GND CON <b>121.8 335.8</b>
------------------------------	---	--	-------------------------------

DME/DME RNP-0.3 NA



EMERG SAFE ALT 100 NM 3300



CATEGORY	A	B	C	D
LNAV MDA	1380-1 567 (600-1)	1440-1 617 (700-1)	1560-2 737 (800-2)	1620-2½ 797 (800-2½)
<b>C</b> CIRCLING*	1380-1 557 (600-1)	1440-1 617 (700-1)	1560-2 737 (800-2)	1620-2½ 797 (800-2½)

HIRL Rwy 5L-23R  
MIRL Rwy 5R-23L

DAYTON, OHIO

39°50'N - 84°03'W

WRIGHT PATTERSON AFB (KFFO)

Amdt 4 13OCT16

# RNAV (GPS) RWY 5R

EC-2, 31 OCT 2024 to 28 NOV 2024

EC-2, 31 OCT 2024 to 28 NOV 2024