

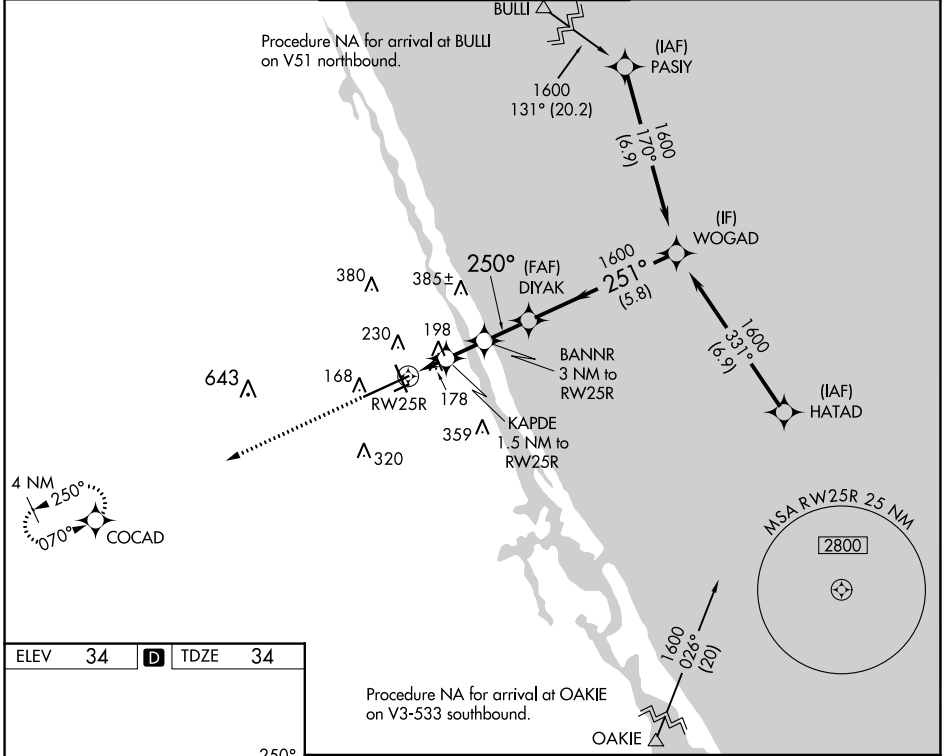
WAAS CH 77533 W25A	APP CRS 250°	Rwy Idg 10293 TDZE 34 Apt Elev 34
--	------------------------	--

RNAV (GPS) RWY 25R

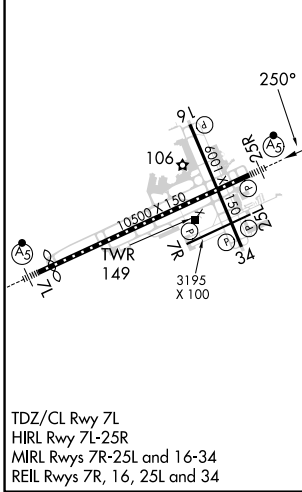
DAYTONA BEACH INTL (DAB)

DME/DME RNP-0.3 NA.		MALSR 	MISSED APPROACH: Climb to 1700 direct COCAD and hold.	
---------------------	--	-----------	---	--

ATIS 132.875	DAYTONA APP CON 125.8 269.075	DAYTONA TOWER 120.7 257.8	GND CON 121.9 348.6	CLNC DEL 119.3
------------------------	---	-------------------------------------	-------------------------------	--------------------------



ELEV 34	D	TDZE 34
---------	----------	---------



1700 COCAD	VGSJ and descent angles not coincident (VGSJ Angle 3.00/TCH 72)				
RW25R		KAPDE 1.5 NM to RW25R	BANNR 3 NM to RW25R	DIYAK 250°	WOGAD 1600
560		1040	1600	251°	1600
1.5 NM		1.5 NM	1.8 NM	5.8 NM	
CATEGORY	A	B	C	D	
LP MDA	440-1/2	407 (500-1/2)	440-3/4	407 (500-3/4)	
LNAV MDA	460-1/2	426 (500-1/2)	460-3/4	426 (500-3/4)	
C CIRCLING	540-1	506 (600-1)	680-1 3/4 646 (700-1 3/4)	700-2 666 (700-2)	

SE-3, 31 OCT 2024 to 28 NOV 2024

SE-3, 31 OCT 2024 to 28 NOV 2024