

LOC/DME I-JKI 111.95	APP CRS 216°	Rwy Idg 10000
Chan 56 (Y)		TDZE 642
		Apt Elev 645

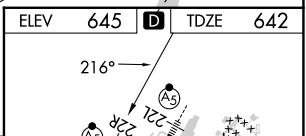
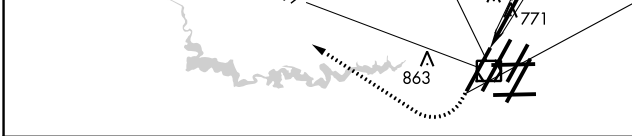
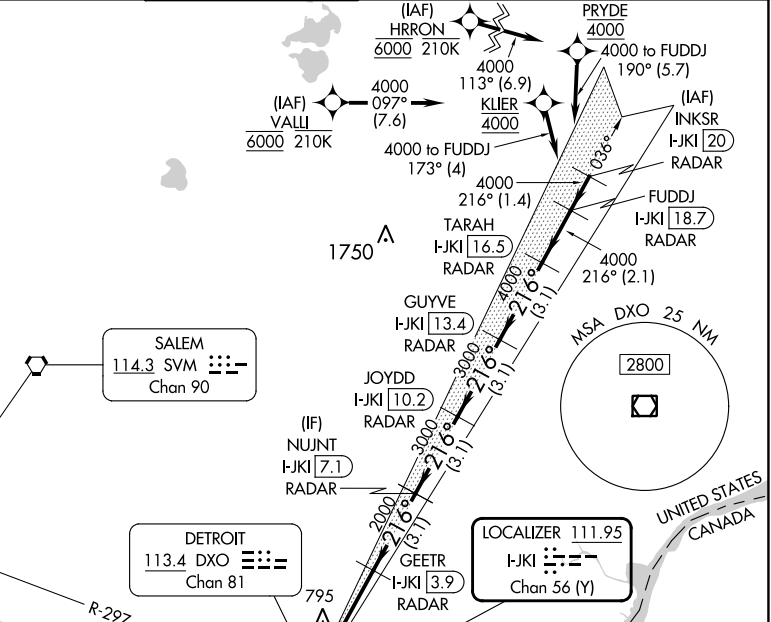
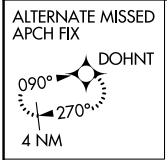
ILS Z or LOC RWY 22R

DETROIT METRO WAYNE COUNTY (DTW)

RNAV 1-GPS. HRRON and VALLI: RNAV 1-DME/DME/IRU or GPS required.
 Aircraft not DME/DME/IRU or GPS equipped - RADAR required for procedure entry.
 Simultaneous approach authorized.
 **RVR 1800 authorized with use of FD or AP or HUD to DA.

MALSR MISSED APPROACH: Climb to 1100 then climbing right turn to 4000 on DXO VOR/DME R-297 to DOHNT INT/DXO 15.5 DME and hold.

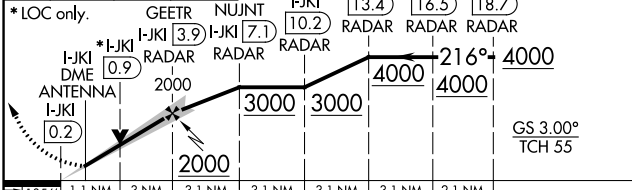
D-ATIS 133.675	DETROIT APP CON 124.05 284.0	METRO TOWER 135.0 317.725	GND CON 121.8 (NW) 119.45 (NE) 132.75 (SW) 119.25 (SE)	CLNC DEL 120.65	CPDLC
--------------------------	--	-------------------------------------	--	---------------------------	-------



1100 4000 DXO R-297 DOHNT INT

VGSI and ILS glidepath not coincident (VGSI Angle 3.00/TCH 71).

GEETR I-JKI [3.9] RADAR	NUJNT I-JKI [7.1] RADAR	JOYDD I-JKI [10.2] RADAR	GUYVE I-JKI [13.4] RADAR	TARAH I-JKI [16.5] RADAR	FUDDJ I-JKI [18.7] RADAR
-------------------------	-------------------------	--------------------------	--------------------------	--------------------------	--------------------------



11056	1.1 NM	3 NM	3.1 NM	3.1 NM	3.1 NM	3.1 NM	2.1 NM
CATEGORY	A		B		C		D
S-ILS 22R**	842/24 200 (200-1/2)						
S-LOC 22R	1060/24	418 (500-1/2)	1060/40		418 (500-3/4)		
☐ CIRCLING	1180-1	535 (600-1)	1180-1 1/2		1240-2		
			535 (600-1 1/2)		595 (600-2)		

ELEV 645	TDZE 642
216°	
TWR 877	
FAF to MAP 4.1 NM	
Knots	60 90 120 150 180
Min:Sec	4:06 2:44 2:03 1:38 1:22

EC-1, 31 OCT 2024 to 28 NOV 2024

EC-1, 31 OCT 2024 to 28 NOV 2024