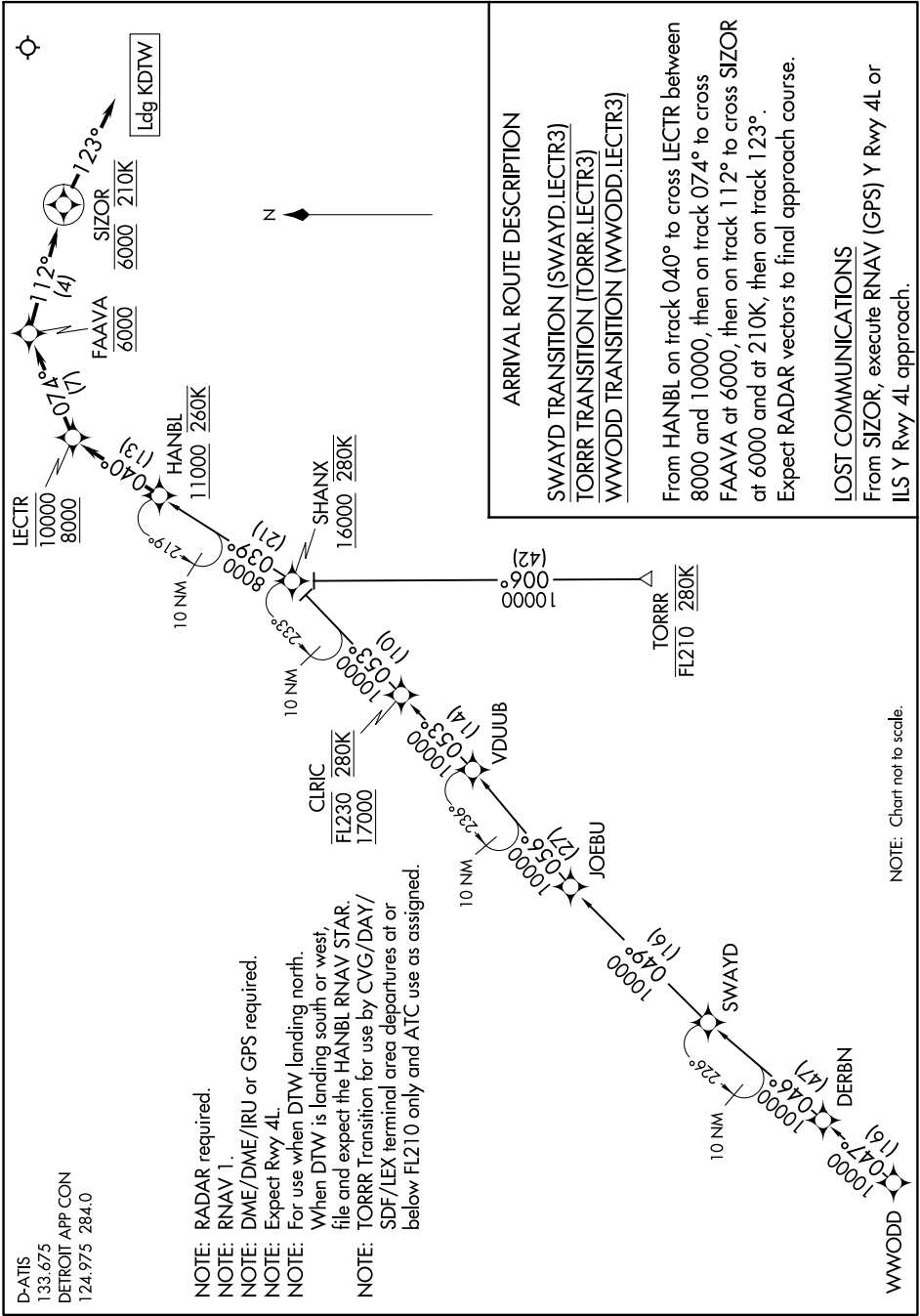


EC-1, 31 OCT 2024 to 28 NOV 2024



D-ATIS
133.675
DETROIT APP CON
124.975 284.0

- NOTE: RADAR required.
- NOTE: RNAV 1.
- NOTE: DME/DME/IRU or GPS required.
- NOTE: Expect Rwy 4L.
- NOTE: For use when DTW landing north.
- NOTE: When DTW is landing south or west, file and expect the HANBL RNAV STAR.
- NOTE: TORR Transition for use by CVG/DAY/SDF/LEX terminal area departures at or below FL210 only and ATC use as assigned.

NOTE: Chart not to scale.

EC-1, 31 OCT 2024 to 28 NOV 2024