

WAAS CH <b>81820</b> <b>W21A</b>	APP CRS <b>216°</b>	Rwy Idg <b>10001</b> TDZE <b>632</b> Apt Elev <b>645</b>
--	------------------------	--

# RNAV (GPS) Z RWY 21L

DETROIT METRO WAYNE COUNTY (DTW)

RNP APCH

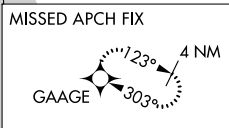
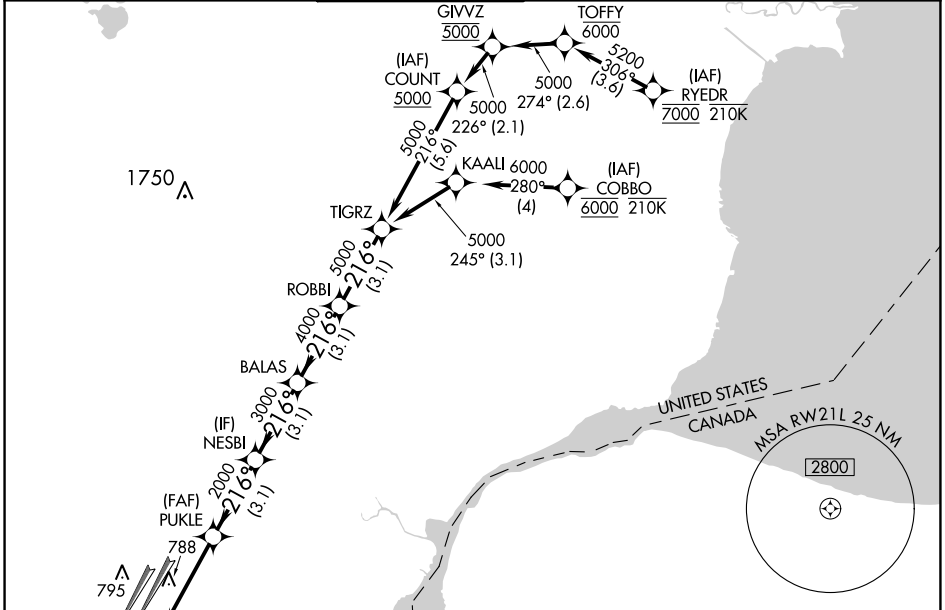
▼ LNAV procedure NA during simultaneous operations. For uncompensated Baro-VNAV systems, LNAV/VNAV NA below -19°C or above 54°C. For inop ALS increase LNAV Cats C and D visibility to RVR 6000. Simultaneous approach authorized. Use of FD or AP required during simultaneous operations.  
 \*\*RVR 1800 authorized with use of FD or HUD to DA.

MALS R

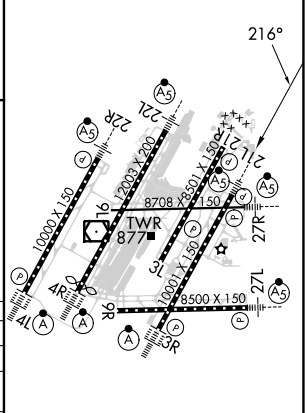
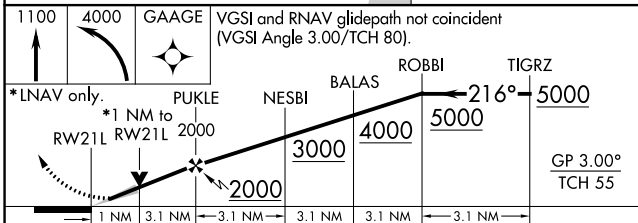


MISSED APPROACH: Climb to 1100 then climbing left turn to 4000 direct GAAGE and hold, continue climb-in hold to 4000.

D-ATIS <b>133.675</b>	DETROIT APP CON <b>125.15 284.0</b>	METRO TOWER <b>118.4 317.725</b>	GND CON <b>121.8 (NW) 119.45 (NE)</b> <b>132.725 (SW) 119.25 (SE)</b>	CLNC DEL <b>120.65</b>	CPDLC
--------------------------	--	-------------------------------------	---	---------------------------	-------



ELEV 645	<b>D</b> TDZE 632
----------	-------------------



CATEGORY	A	B	C	D
LPV DA**		832/24	200 (200-½)	
LNAV/VNAV DA		1062/40	430 (500-¾)	
LNAV MDA	1040/24	408 (400-½)	1040/40	408 (400-¾)
<b>C</b> CIRCLING	1180-1	535 (600-1)	1180-1½ 535 (600-1½)	1240-2 595 (600-2)

HIRL all runways  
 REIL Rwy's 3L, 9L, 9R and 21R  
 TDZ/CL Rwy's 3R, 4L, 4R and 22R

EC-1, 31 OCT 2024 to 28 NOV 2024

EC-1, 31 OCT 2024 to 28 NOV 2024