

LOC I-DLH <b>110.3</b>	APP CRS <b>093°</b>	Rwy Idg TDZE <b>1428</b> Apt Elev <b>1428</b>	<b>10062</b>
---------------------------	------------------------	---	--------------

# ILS RWY 9 (SA CAT I)

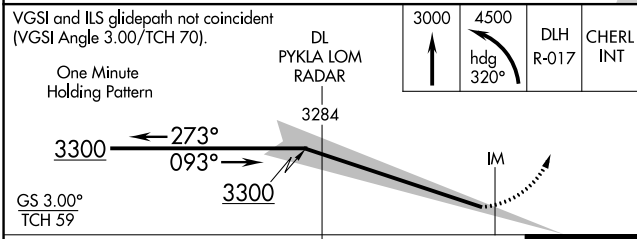
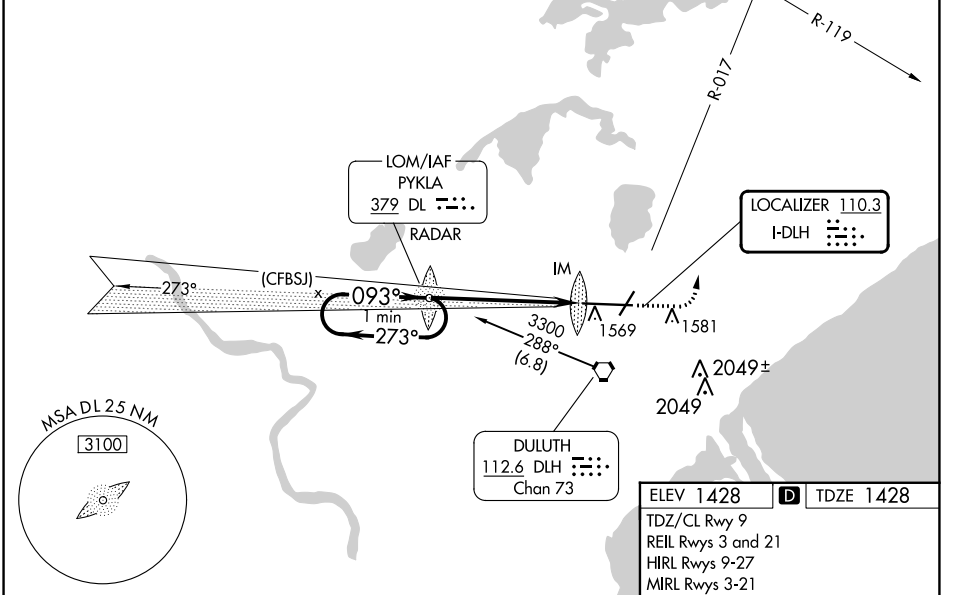
## DULUTH INTL (DLH)

<b>ASR</b> Requires specific OPSPEC, MSPEC, or LOA approval and use of HUD to DH. ADF or RADAR required.	ALSF-2 	<b>MISSED APPROACH:</b> Climb to 3000 then climbing left turn to 4500 on heading 320° and on DLH VORTAC R-017 to CHERL INT/DLH 15 DME and hold.	
	ATIS <b>124.1 270.1</b>	DULUTH APP CON <b>125.45 233.7</b>	DULUTH TOWER <b>118.3 257.8</b>

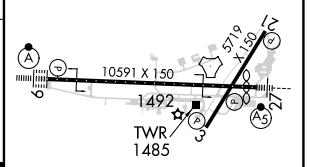
ALTERNATE MISSED APCH FIX

PYKLA  
DL 379  
RADAR

**ADF or RADAR REQUIRED**



ELEV 1428	<b>D</b>	TDZE 1428
TDZ/CL Rwy 9 REIL Rws 3 and 21 HIRL Rws 9-27 MIRL Rws 3-21		



CATEGORY	A	B	C	D
S-ILS 9	RA 144/14 150 DA 1578			

**SA CATEGORY I ILS - SPECIAL AIRCREW & AIRCRAFT CERTIFICATION REQUIRED**

NC-1, 31 OCT 2024 to 28 NOV 2024

NC-1, 31 OCT 2024 to 28 NOV 2024