

LOC/DME I-EUG 110.1 Chan 38	APP CRS 164°	Rwy Idg 8009 TDZE 364 Apt Elev 374
--	------------------------	---

ILS or LOC RWY 16R

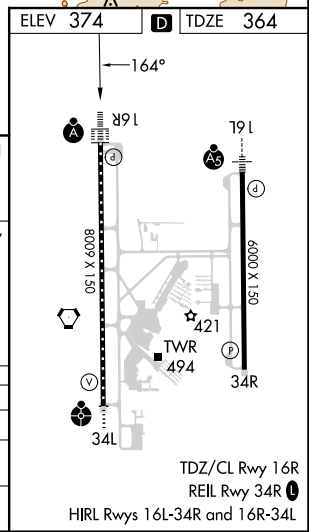
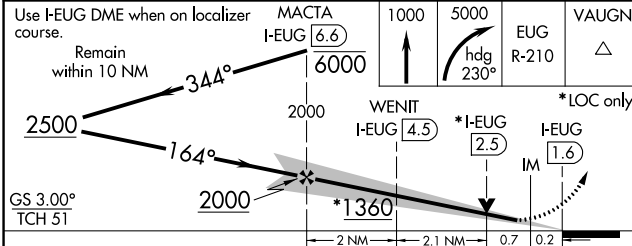
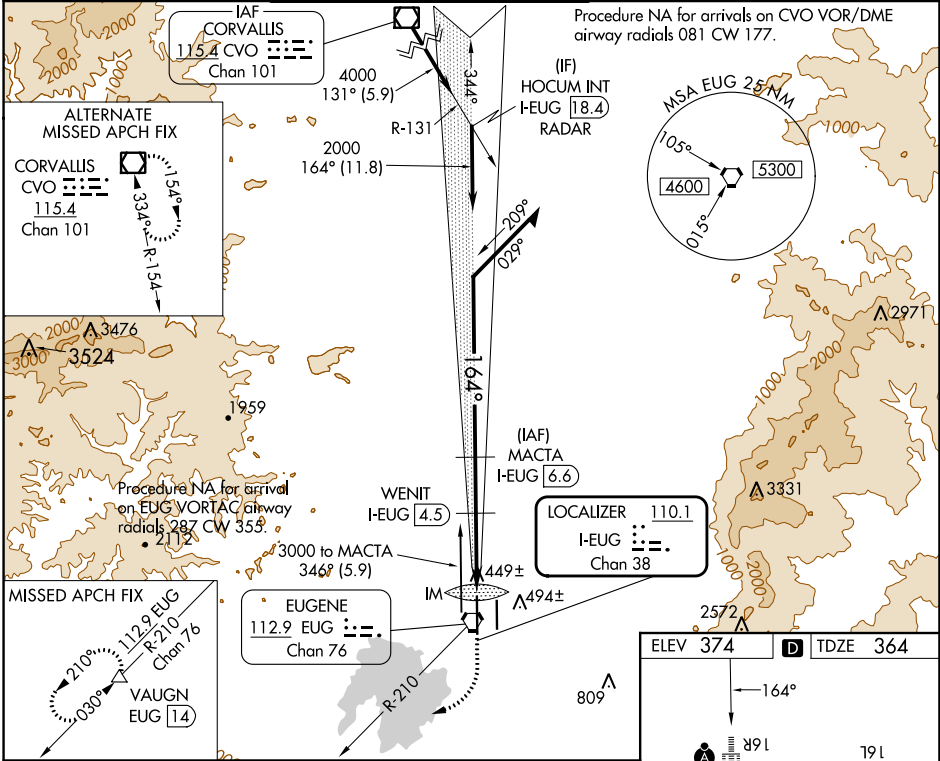
MAHLON SWEET FLD (EUG)

DME required.
 Simultaneous approach authorized.

ALSIF-2

MISSED APPROACH: Climb to 1000 then climbing right turn to 5000 on heading 230° and on EUG VORTAC R-210 to VAUGN/EUG 14 DME and hold, continue climb-in-hold to 5000.

ATIS 125.225	CASCADE APP CON ★ 119.6 348.7	EUGENE TOWER ★ 118.9 (CTAF) 371.9 (Rwy 16R/34L) 124.15 371.9 (Rwy 16L/34R)	GND CON 121.7 269.5	CLNC DEL 121.7 269.5	UNICOM 122.95
------------------------	---	---	-------------------------------	--------------------------------	-------------------------



Use I-EUG DME when on localizer course.	MACTA I-EUG [6.6] 6000	1000	5000	VAUGN
Remain within 10 NM	344°	↑	hdg 230°	△
2500	164°	2000	WENIT I-EUG [4.5]	*LOC only
GS 3.00° TCH 51	2000	*1360	*I-EUG [2.5]	I-EUG [1.6]
			IM	
			2 NM	2.1 NM
			0.7	0.2
CATEGORY	A	B	C	D
S-ILS 16R		564/18	200 (200-½)	
S-LOC 16R	700/24	336 (400-½)	700/26	336 (400-½)
CIRCLING	820-1 446 (500-1)	840-1 466 (500-1)	1000-1¼ 626 (700-1¼)	1140-2½ 766 (800-2½)

NW-1, 31 OCT 2024 to 28 NOV 2024

NW-1, 31 OCT 2024 to 28 NOV 2024

TDZ/CL Rwy 16R
REIL Rwy 34R
HIRL Rwy 16L-34R and 16R-34L