

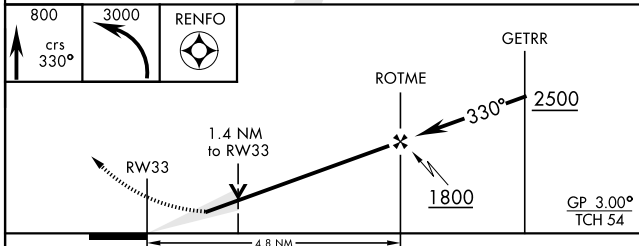
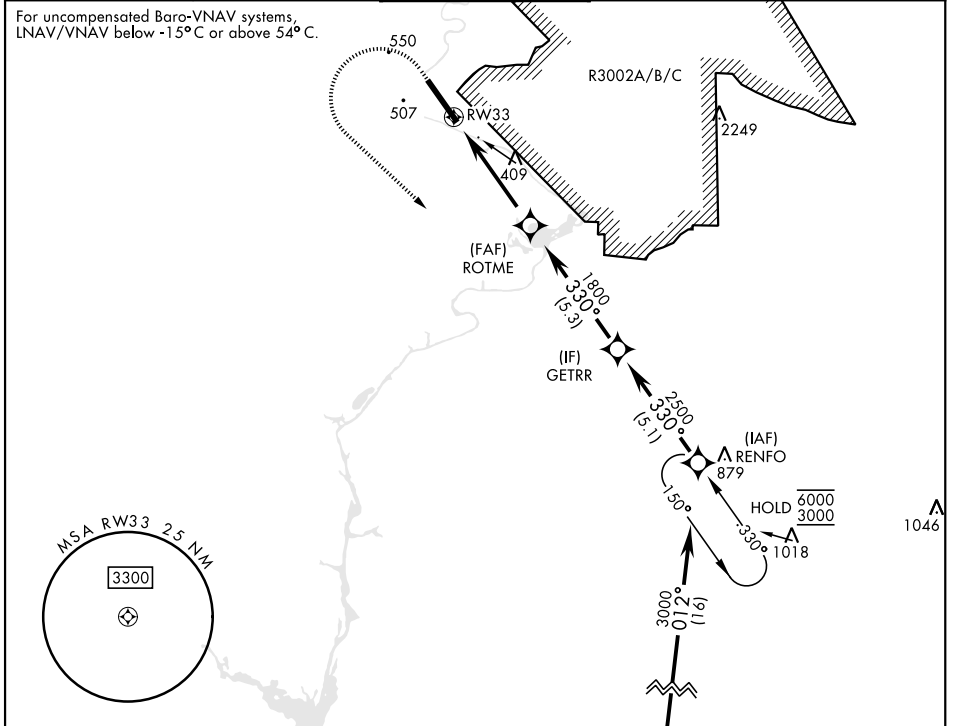
# RNAV (GPS) RWY 33

WAAS CH <b>67545</b> <b>W33A</b>	APCH CRS <b>330°</b>	Rwy Ldg TDZE Arpt Elev <b>9302</b> <b>226</b> <b>227</b>	[USA]	LAWSON AAF (KLSF)
--	-------------------------	---	-------	-------------------

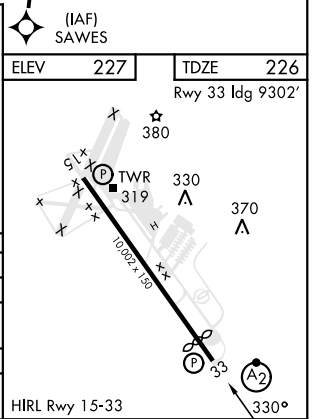
RNP APCH-GPS	SALSF <b>(A2)</b>	MISSED APPROACH: Climb to 800 then climbing left turn to 3000 direct RENFO and hold.
--------------	----------------------	--

\* When ALS inop, increase vis to 1 3/8 mile.  
 \*\* When ALS inop, increase CAT AB RVR to 55, vis to 1 mile; CAT CD vis to 1 3/8 miles.  
 \*\*\* Circling not authorized NE of Rwy 15-33. Not authorized when tower closed.

ATIS ★ <b>134.375</b>	ATLANTA APP CON <b>125.5 323.1</b>	TOWER <b>119.05 (CTAF) 269.525</b>	GND CON <b>121.7 254.25</b>	CLNC DEL <b>121.7 251.15</b>
--------------------------	---------------------------------------	---------------------------------------	--------------------------------	---------------------------------



CATEGORY	A	B	C	D
LPV DA	427/40	200	(200-3/4)	
LNAV/VNAV DA*	701/60	474	(500-1 1/8)	
LNAV MDA**	740/40 513 (600-3/4)	740-1 1/4 513 (600-1 1/4)		
*** CIRCLING	820-1	860-1	960-2	1080-2 3/4
	593 (600-1)	633 (700-1)	733 (800-2)	853 (900-2 1/4)



# RNAV (GPS) RWY 33

SE-4, 31 OCT 2024 to 28 NOV 2024

SE-4, 31 OCT 2024 to 28 NOV 2024