

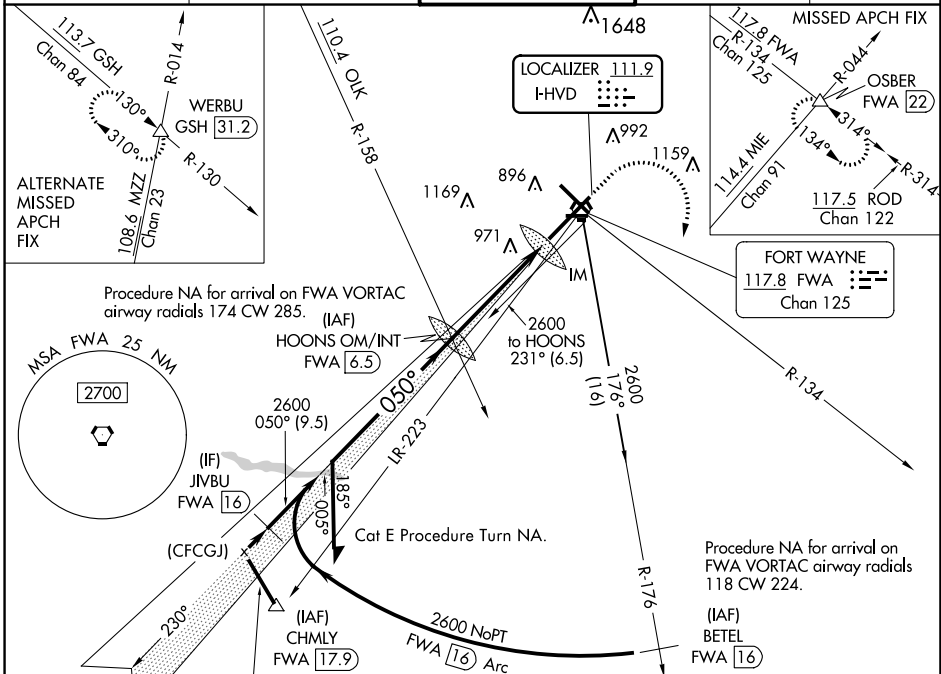
LOC I-HVD 111.9	APP CRS 050°	Rwy ldg 11981
		TDZE 815
		Apt Elev 815

ILS or LOC RWY 5

FORT WAYNE INTL (FWA)

<p>▼ For inop ALS, increase S-ILS 5 Cat E visibility to RVR 4000 and S-LOC 5 Cat C/D/E visibility to 1½ SM.</p> <p>▲ ASR</p>	<p>ALSF-2</p> <p>MISSED APPROACH: Climb to 1300 then climbing right turn to 3000 on FWA R-134 to OSBER INT/FWA 22 DME and hold.</p>
--	--

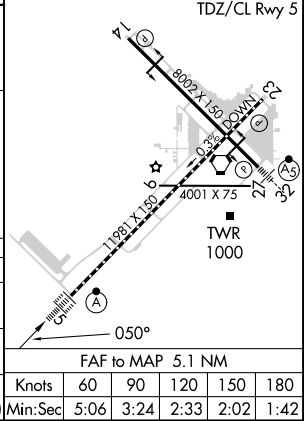
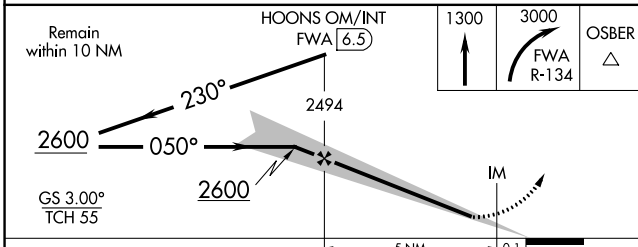
<p>ATIS 121.25 360.825</p>	<p>FORT WAYNE APP CON 127.2 284.6</p>	<p>FORT WAYNE TOWER 119.1 269.325</p>	<p>GND CON 121.9 348.6</p>	<p>CLNC DEL 124.75</p>
---------------------------------------	--	--	---------------------------------------	-----------------------------------



EC-2, 31 OCT 2024 to 28 NOV 2024

EC-2, 31 OCT 2024 to 28 NOV 2024

ELEV	815	D TDZE	815
HRL Rwy 5-23 and 14-32			
REIL Rwy 14 and 23			
TDZ/CL Rwy 5			



CATEGORY	A	B	C	D	E
S-ILS 5		1015/18	200 (200-½)		1015/24 200 (200-½)
S-LOC 5	1300/24	485 (500-½)	1300/50 485 (500-1)		
C CIRCLING	1300-1	485 (500-1)	1420-1¾ 605 (700-1¾)	1520-2¼ 705 (800-2¼)	1520-2½ 705 (800-2½)
Knots: 60 90 120 150 180					
Min:Sec: 5:06 3:24 2:33 2:02 1:42					