

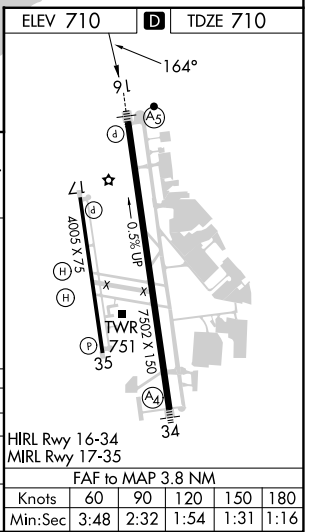
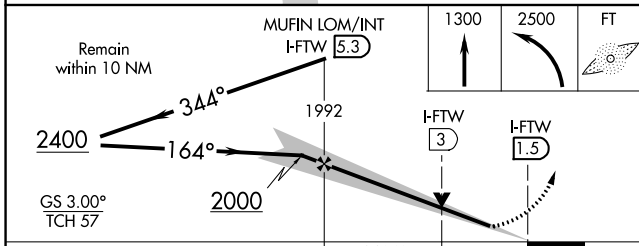
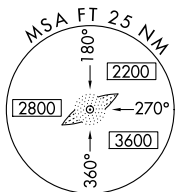
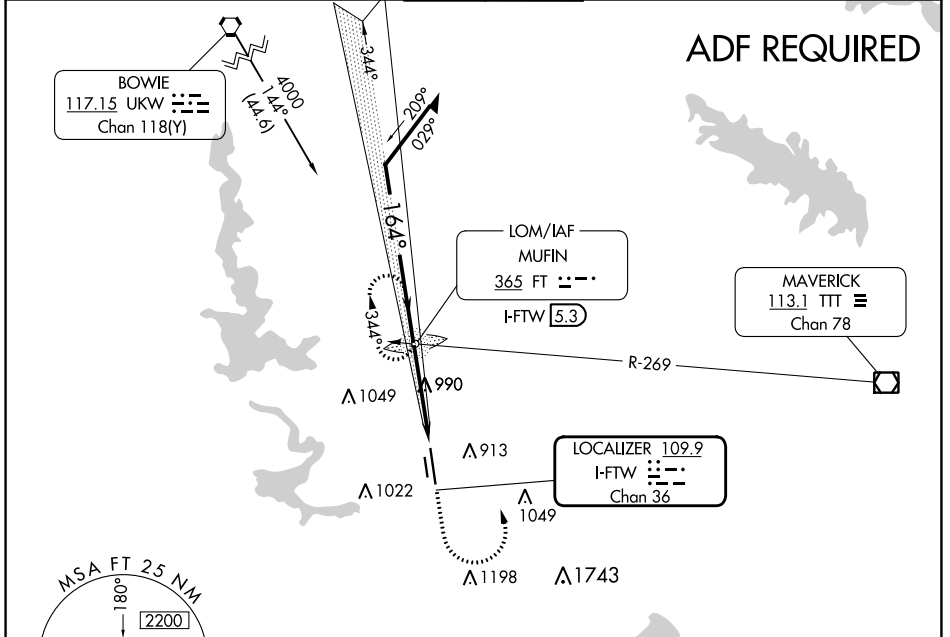
LOC I-FTW 109.9 Chan 36	APP CRS 164°	Rwy Idg 7502 TDZE 710 Apt Elev 710
---	------------------------	---

ILS or LOC RWY 16

FORT WORTH MEACHAM INTL (FTW)

<p>⚠ *RVR 1800 authorized with the use of FD or AP or HUD to DA.</p> <p>⚠ MALSR</p> 	<p>MISSED APPROACH: Climb to 1300 then climbing left turn to 2500 direct FT LOM and hold, continue climb-in-hold to 2500.</p>
---	---

ATIS 120.7	LONE STAR APP CON (North) 118.1 306.95 (South) 135.975 379.9	MEACHAM TOWER 118.3 257.8	GND CON 121.9	CLNC DEL 124.65
----------------------	--	-------------------------------------	-------------------------	---------------------------



CATEGORY	A	B	C	D
S- ILS 16*	910/24 200 (200-1/2)			
S- LOC 16	1240/24 530 (600-1/2)	1240/50 530 (600-1)	1240/60 530 (600-1 1/4)	
CIRCLING	1260-1 550 (600-1)	1280-1 570 (600-1)	1340-1 3/4 630 (700-1 3/4)	1500-2 1/2 790 (800-2 1/2)

SC-2, 31 OCT 2024 to 28 NOV 2024

SC-2, 31 OCT 2024 to 28 NOV 2024