

# KUSSO ONE DEPARTURE (RNAV)

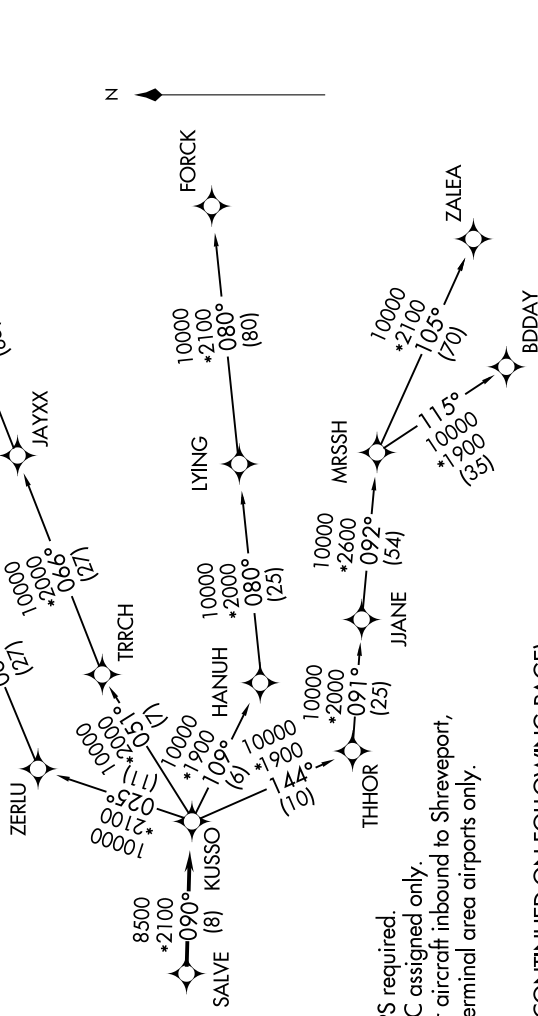
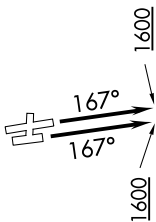
SC-2, 31 OCT 2024 to 28 NOV 2024

### TOP ALTITUDE: ASSIGNED BY ATC

#### TAKEOFF MINIMUMS

Rwys 16, 17: Standard.  
 Rwy 34: 300-2 or standard with minimum climb of 225' per NM to 1100, or alternatively, with standard takeoff minimums and a normal 200' per NM climb gradient, takeoff must occur no later than 2000' prior to DER.  
 Rwy 35: 300-1½ or standard with minimum climb of 210' per NM to 900, or alternatively, with standard takeoff minimums and a normal 200' per NM climb gradient, takeoff must occur no later than 1200' prior to DER.

LONE STAR DEP CON  
 118.1 306.95 (NORTH)  
 135.975 379.9 (SOUTH)  
 ATIS  
 120.7  
 CLNC DEL  
 124.65  
 GND CON  
 121.9  
 MEACHAM TOWER  
 118.3 257.8



NOTE: RADAR required.  
 NOTE: RNAV 1.  
 NOTE: DME/DME/IRU or GPS required.  
 NOTE: BDDAY transition: ATC assigned only.  
 NOTE: MRSSH transition: For aircraft inbound to Shreveport, Jackson and Monroe terminal area airports only.

(CONTINUED ON FOLLOWING PAGE)

NOTE: Chart not to scale.

SC-2, 31 OCT 2024 to 28 NOV 2024

# KUSSO ONE DEPARTURE (RNAV)

(KUSSO1.KUSSO) 24MAR22