

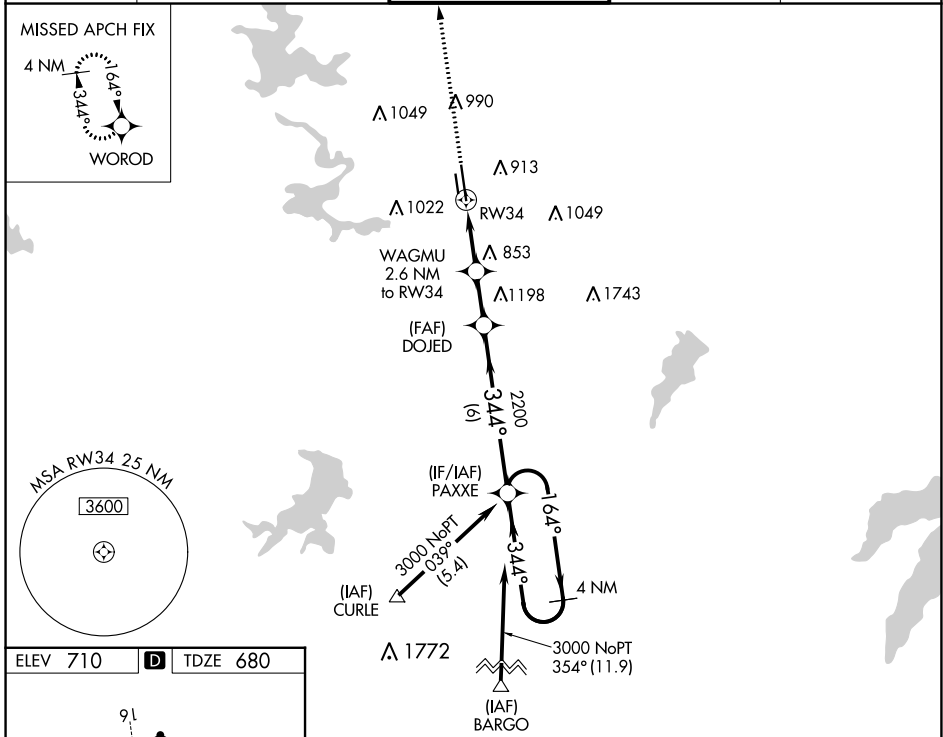
WAAS CH 53412 W34A	APP CRS 344°	Rwy ldg 7455 TDZE 680 Apt Elev 710
--	------------------------	---

RNAV (GPS) RWY 34

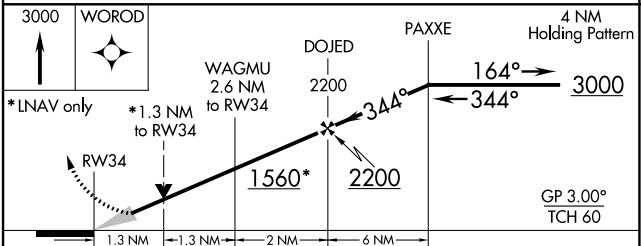
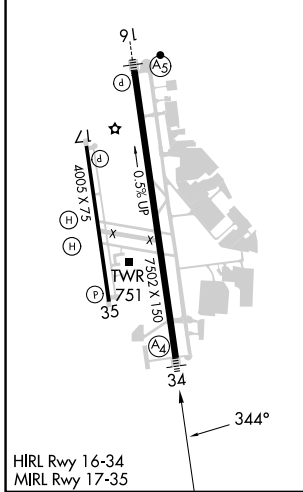
FORT WORTH MEACHAM INTL (FTW)

⚠ For uncompensated Baro-VNAV systems, LNAV/VNAV NA below -5°C (23°F) or above 54°C (130°F). DME/DME RNP-0.3 NA. For inop MALS, increase LNAV/VNAV Cat D and LNAV Cat D visibility to 1½ mile.	MALS 	MISSED APPROACH: Climb to 3000 direct WOROD and hold.
---	----------	---

ATIS 120.7	LONE STAR APP CON (North) 118.1 306.95 (South) 135.975 379.9	MEACHAM TOWER 118.3 257.8	GND CON 121.9	CLNC DEL 124.65
----------------------	--	-------------------------------------	-------------------------	---------------------------



ELEV 710	D	TDZE 680
----------	----------	----------



CATEGORY	A	B	C	D
LPV DA		880-¾	200 (200-¾)	
LNAV/VNAV DA		1091-1½	411 (400-1½)	
LNAV MDA	1160-¾	480 (500-¾)	1160-1½	480 (500-1½)
C CIRCLING	1260-1 550 (600-1)	1280-1 570 (600-1)	1340-1¾ 630 (700-1¾)	1500-2½ 790 (800-2½)

SC-2, 31 OCT 2024 to 28 NOV 2024

SC-2, 31 OCT 2024 to 28 NOV 2024