

KUSSO ONE DEPARTURE (RNAV)

FORT WORTH, TEXAS

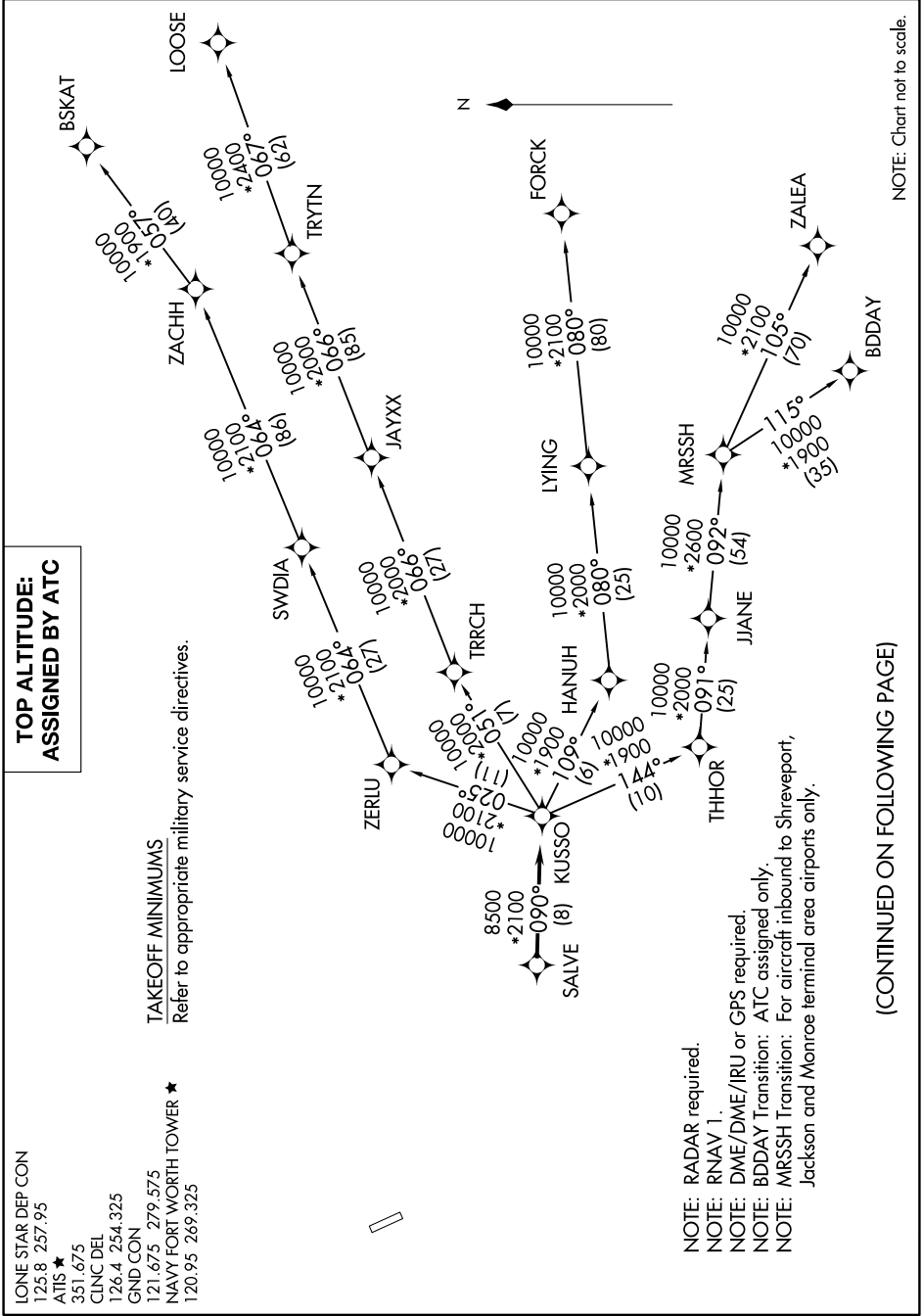
SC-2, 31 OCT 2024 to 28 NOV 2024

LONE STAR DEP CON
 125.8 257.95
 ATIS ★
 351.675
 CLINC DEL
 126.4 254.325
 GND CON
 121.675 279.575
 NAVY FORT WORTH TOWER ★
 120.95 269.325

TOP ALTITUDE: ASSIGNED BY ATC

TAKEOFF MINIMUMS

Refer to appropriate military service directives.



NOTE: RADAR required.
 NOTE: RNAV 1.
 NOTE: DME/DME/IRU or GPS required.
 NOTE: BDDAY Transition: ATC assigned only.
 NOTE: MRSSH Transition: For aircraft inbound to Shreveport, Jackson and Monroe terminal area airports only.

(CONTINUED ON FOLLOWING PAGE)

NOTE: Chart not to scale.

SC-2, 31 OCT 2024 to 28 NOV 2024