

LOC/DME I-FAT 111.3 Chan 50	APP CRS 292°	Rwy Idg 29R 29L TDZE 9227 8008 333 331 Apt Elev 336 336
--	------------------------	--

ILS Y or LOC Y RWY 29R

FRESNO YOSEMITE INTL (FAT)

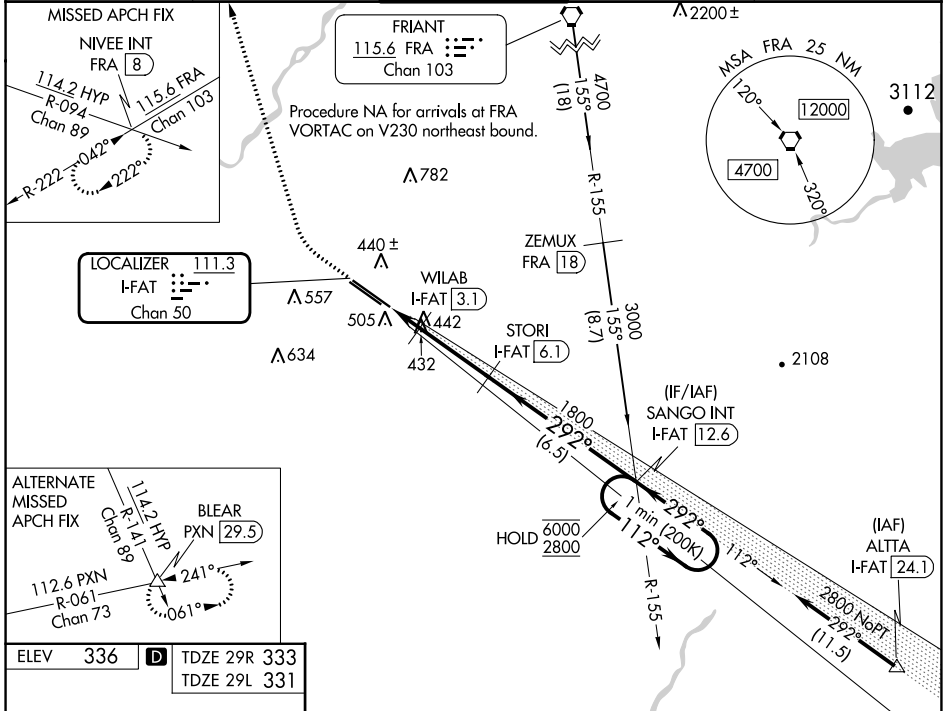
DME required for LOC only.

⚠ For inop ALS, increase S-ILS 29R Cat E visibility to RVR 4000 and S-LOC 29R Cats C, D and E visibility to RVR 5500. Hold in lieu of PT NA for Cat E aircraft.

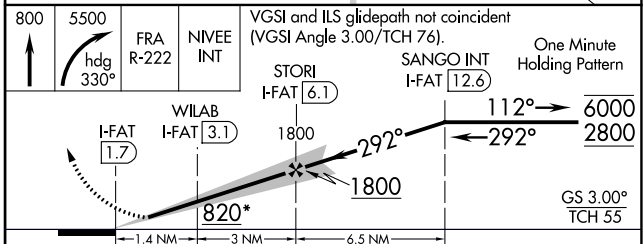
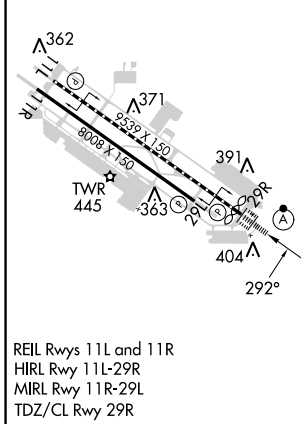
ALS-F2 Rwy 29R

MISSED APPROACH: Climb to 800 then climbing right turn to 5500 on heading 330° and FRA VORTAC R-222 to NIVEE INT/FRA 8 DME and hold, continue climb-in-hold to 5500.

ATIS 121.35 273.6	FRESNO APP CON 119.6 351.95	FRESNO TOWER 118.2 251.1	GND CON 121.7 348.6	CLNC DEL 124.35 348.6
-----------------------------	---------------------------------------	------------------------------------	-------------------------------	---------------------------------



ELEV 336	TDZE 29R 333
	TDZE 29L 331



CATEGORY	A	B	C	D	E
S-ILS 29R	533/18 200 (200-½)				
S-LOC 29R	700/24	367 (400-½)	700/35 367 (400-¾)		
SIDESTEP 29L	700/55	369 (400-1)	700-1½ 369 (400-1½)	700-2	369 (400-2)
ⓐ CIRCLING	820-1	484 (500-1)	920-1½ 584 (600-1½)	920-2	1140-2¾ 804 (900-2¾)

SW-2, 31 OCT 2024 to 28 NOV 2024

SW-2, 31 OCT 2024 to 28 NOV 2024