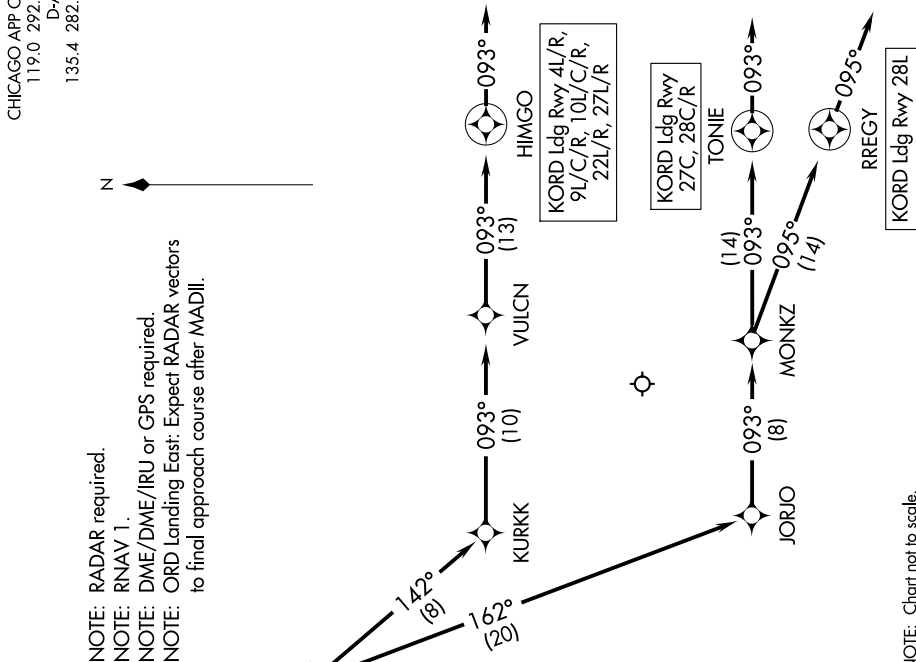


CHICAGO APP CON  
119.0 292.125  
D-ATIS  
135.4 282.225

NOTE: RADAR required.  
NOTE: RNAV 1.  
NOTE: DME/DME/IRU or GPS required.  
NOTE: ORD Landing East: Expect RADAR vectors to final approach course after MADII.



EC-3, 31 OCT 2024 to 28 NOV 2024

**ARRIVAL ROUTE DESCRIPTION**

From FYTTE on track 103° to MOTRR, then on track 103° to COGSS, then on track 129° to MADII, then on track 133° to SOOILU.

**LANDING RWYS 4L/R, 9L/C/R, 10L/C/R, 22L/R, 27L/R:**  
From SOOILU on track 142° to KURKK, then on track 093° to VULCN, then on track 093° to HIMGO, then on track 093°. Expect RADAR vectors to final approach course.

**LANDING RWYS 27C, 28C/R:** From SOOILU on track 162° to JORJO, then on track 093° to MONKZ, then on track 093° to TONIE, then on track 093°. Expect RADAR vectors to final approach course.

**LANDING RWY 28L:** From SOOILU on track 162° to JORJO, then on track 093° to MONKZ, then on track 095° to RREGY, then on track 095°. Expect RADAR vectors to final approach course.

NOTE: Chart not to scale.

EC-3, 31 OCT 2024 to 28 NOV 2024