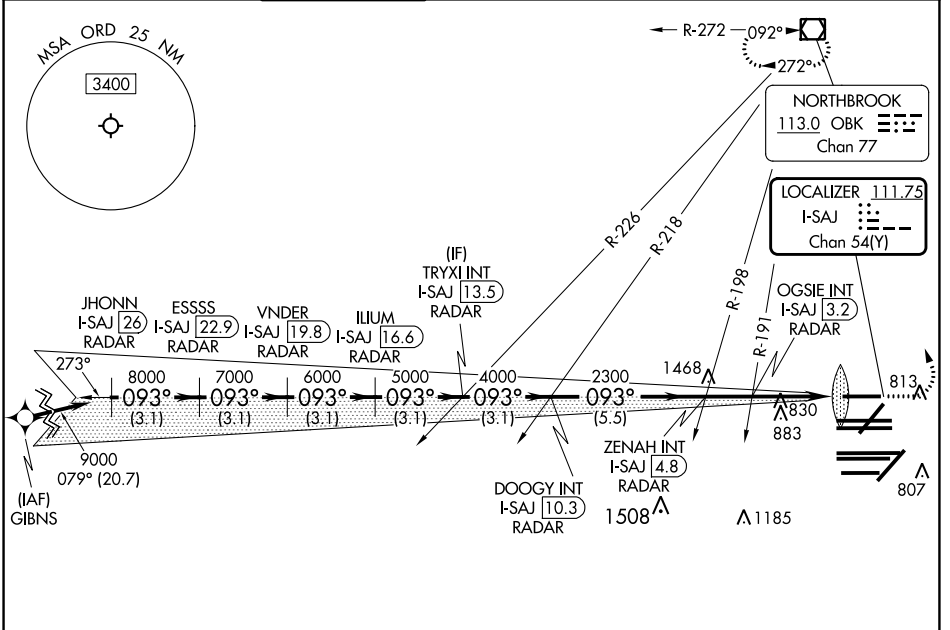


LOC/DME I-SAJ <b>111.75</b> Chan 54 (Y)	APP CRS <b>093°</b>	Rwy Idg <b>7500</b> TDZE <b>668</b> Apt Elev <b>680</b>
---	------------------------	--

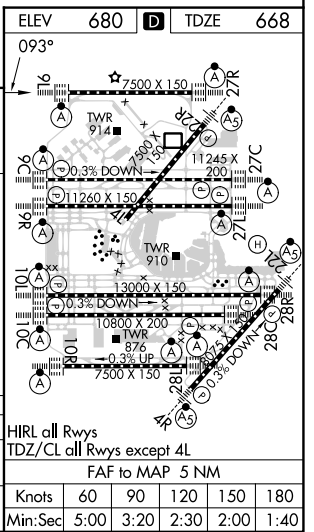
# ILS or LOC RWY 9L

CHICAGO O'HARE INTL (ORD)

RNAV-1 GPS or RADAR required for procedure entry. RADAR or DME required.		ALSIF-2 		MISSED APPROACH: Climb to 1100 then climbing left turn to 4000 direct OBK VOR/DME and hold, continue climb-in-hold to 4000.	
Simultaneous approach authorized.					
D-ATIS <b>135.4</b> <b>282.225</b>	CHICAGO APP CON <b>119.0 292.125</b>	O'HARE TOWER <b>128.15 348.0</b>	GND CON (TWR CENTER) <b>124.125</b> (TWR NORTH) <b>118.05</b> (TWR SOUTH) <b>226.675</b> (ALL TWRs)	CLNC DEL <b>121.6</b>	CPDLC



JHONN I-SAJ 26 RADAR	ESSSS I-SAJ 22.9 RADAR	VNDER I-SAJ 19.8 RADAR	ILIUM I-SAJ 16.6 RADAR	DOOGY INT I-SAJ 10.3 RADAR	TRYXI INT I-SAJ 13.5 RADAR	ZENAH INT I-SAJ 4.8 RADAR	OGSIE INT I-SAJ 3.2 RADAR	I-SAJ DME ANTENNA	IM	1100	4000	OBK
3.1 NM	3.1 NM	3.1 NM	3.1 NM	3.1 NM	5.5 NM	1.6 NM	2.2	1.1	0.1	*LOC only		
GS 3.00° TCH 55												
CATEGORY	A		B		C		D					
S-ILS 9L			868/18		200 (200-½)							
S-LOC 9L	1100/24		432 (500-½)		1100/40		432 (500-¾)					



EC-3, 31 OCT 2024 to 28 NOV 2024

EC-3, 31 OCT 2024 to 28 NOV 2024