

LOC/DME I-HZJ 110.75 Chan 44 (Y)	APP CRS 094°	Rwy Idg 7500 TDZE 680 Apt Elev 680
---	------------------------	---

ILS Z or LOC Z RWY 10R

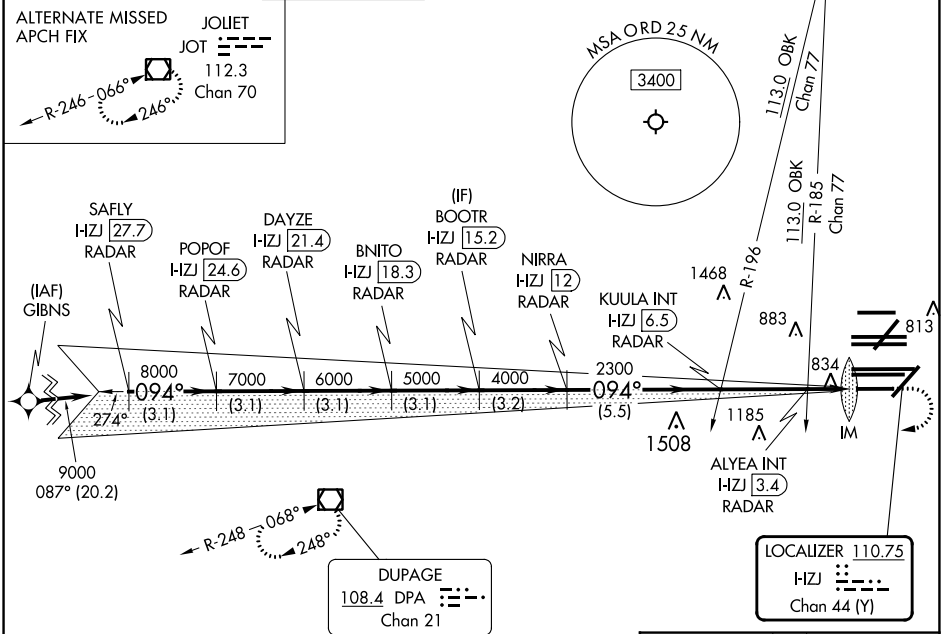
CHICAGO O'HARE INTL (ORD)

RNAV 1-GPS or RADAR required for procedure entry. DME or RADAR required.
 From GIBNS: RNAV-1 GPS required.
 Simultaneous approach authorized.
 For inop ALS, increase S-LOC 10R Cat C and D visibility to RVR 6000.

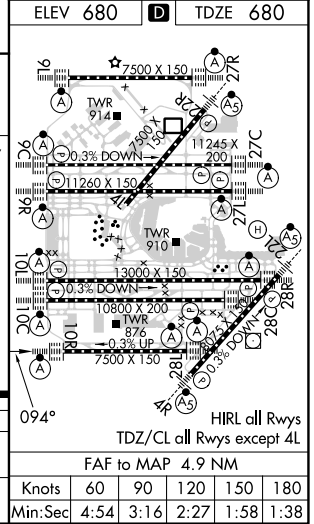


MISSED APPROACH: Climb to 1200 then climbing right turn to 4000 direct DPA VOR/DME and hold.

D-ATIS 135.4 282.225	CHICAGO APP CON 119.0 292.125	O'HARE TOWER 133.0 348.0	GND CON (TWR CENTER) 124.125 (TWR NORTH) 118.05 (TWR SOUTH) 226.675 (ALL TWRS)	(TWR CENTER) (OBND) 121.75 (OBND) 121.9 (IBND)	CLNC DEL 121.6	CPDLC
--	---	------------------------------------	--	--	--------------------------	-------



SAFLY HZJ [27.7] RADAR	DAYZE HZJ [21.4] RADAR	BOOTR HZJ [15.2] RADAR	KUULA INT HZJ [6.5] RADAR	ALYEA INT HZJ [3.4] RADAR	1200	4000	DPA
POPOF HZJ [24.6] RADAR	BNITO HZJ [18.3] RADAR	NIRRA HZJ [12] RADAR	2300	1220	*LOC only		
9000	8000	7000	6000	5000	4000	2300	1220
GS 3.00° TCH 55							
3.1 NM	3.1 NM	3.1 NM	3.1 NM	3.2 NM	5.5 NM	3.1 NM	0.7 NM 0.1 NM
CATEGORY	A		B		C		D
S-ILS 10R	880/18		200 (200-½)				
S-LOC 10R	1100/24		420 (500-½)				



EC-3, 31 OCT 2024 to 28 NOV 2024

EC-3, 31 OCT 2024 to 28 NOV 2024