

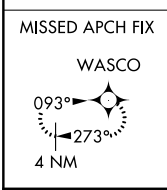
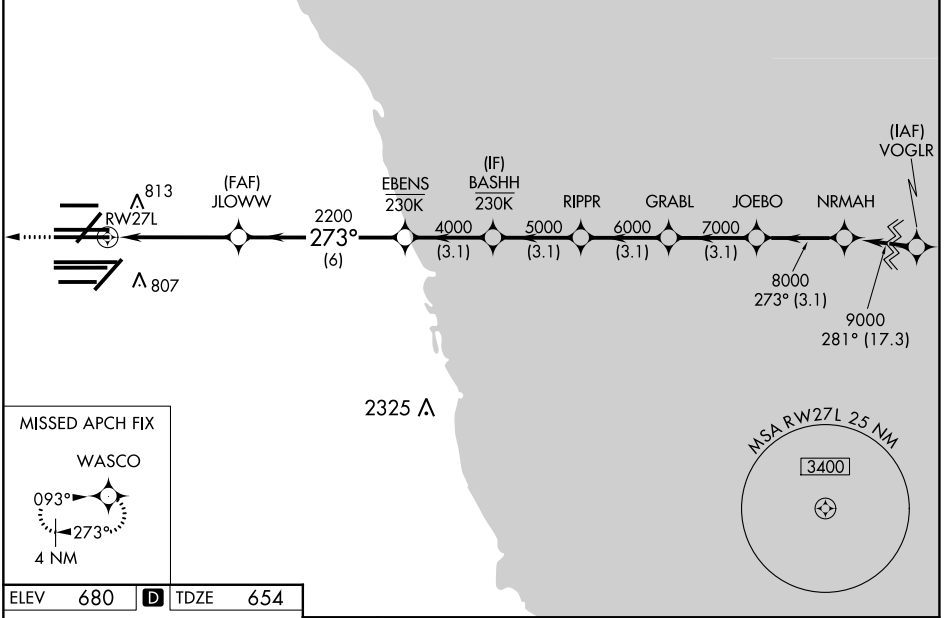
WAAS CH 77804 W27A	APP CRS 273°	Rwy Idg 11260	TDZE 654
		Apt Elev 680	

# RNAV (GPS) Z RWY 27L

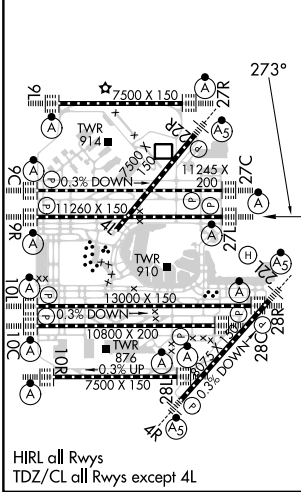
CHICAGO O'HARE INTL (ORD)

RNP APCH - GPS.	ALSF-2	MISSED APPROACH: Climb to 4000 direct WASCO and hold.
<p>Simultaneous approach authorized. LNAV procedure NA during simultaneous operations. Use of FD or AP required during simultaneous operations. For uncompensated Baro-VNAV systems, LNAV/VNAV NA below -19°C or above 54°C.</p>		

D-ATIS 135.4 282.225	CHICAGO APP CON 119.0 292.125	O'HARE TOWER 126.9 348.0	GND CON (TWR NORTH) 124.125 (TWR SOUTH) 118.05 (ALL TWRs) 226.675	(TWR CENTER) 121.75 (IOBND) 121.9 (IBND)	CLNC DEL 121.6	CPDLC
----------------------------	----------------------------------	-----------------------------	--	--	-------------------	-------



ELEV 680	<b>D</b>	TDZE 654
----------	----------	----------



4000	WASCO	VGSI and RNAV glidepath not coincident (VGSI Angle 3.00/TCH 77).	NRMAH	
	JLOWWW	EBENS	BASHH	
	2200	4000	5000	
	1.2	3.5	6	
	RW27L	RIPPR	GRABL	
		6000	7000	
		3.1 NM	3.1 NM	
		JOEBO	NRMAH	
		8000	9000	
		3.1 NM	3.1 NM	
			GP 3.00° TCH 57	
CATEGORY	A	B	C	D
LPV	DA	854/18	200 (200-1/2)	
LNAV/VNAV	DA	1088/40	434 (500-3/4)	
LNAV MDA	1100/24	446 (500-1/2)	1100/45	446 (500-7/8)

EC-3, 31 OCT 2024 to 28 NOV 2024

EC-3, 31 OCT 2024 to 28 NOV 2024