

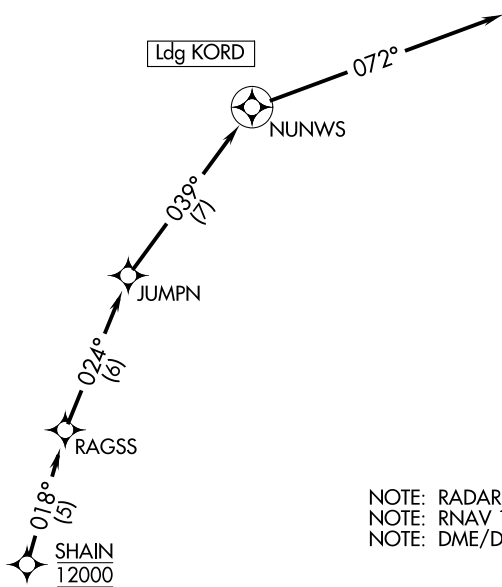
(SHAIN.SHAIN2) 20310

AL-166

CHICAGO O'HARE INTL (ORD)
CHICAGO, ILLINOIS

SHAIN TWO ARRIVAL(RNAV) Arrival Routes

CHICAGO APP CON
119.0 292.125
D-ATIS
135.4 282.225



NOTE: RADAR required.
NOTE: RNAV 1.
NOTE: DME/DME/IRU or GPS required.

NOTE: Chart note to scale.

ARRIVAL ROUTE DESCRIPTION

From SHAIN on track 018° to RAGSS, then on track 024° to JUMPN, then on track 039° to NUNWS, then on track 072°. Expect RADAR vectors to final approach course.

SHAIN TWO ARRIVAL(RNAV) Arrival Routes
(SHAIN.SHAIN2) 05NOV20

CHICAGO, ILLINOIS
CHICAGO O'HARE INTL (ORD)

EC-3, 31 OCT 2024 to 28 NOV 2024

EC-3, 31 OCT 2024 to 28 NOV 2024