

GOLDSBORO, NORTH CAROLINA

# HI-ILS or LOC Z RWY 8

LOC I-GSB <b>109.3</b>	APCH CRS <b>081°</b>	Rwy ldg <b>11,760</b> TDZE <b>73</b> Arprt Elev <b>109</b>
---------------------------	-------------------------	--

[USAF]

SEYMOUR JOHNSON AFB (KGSB)

RADAR or DME required.

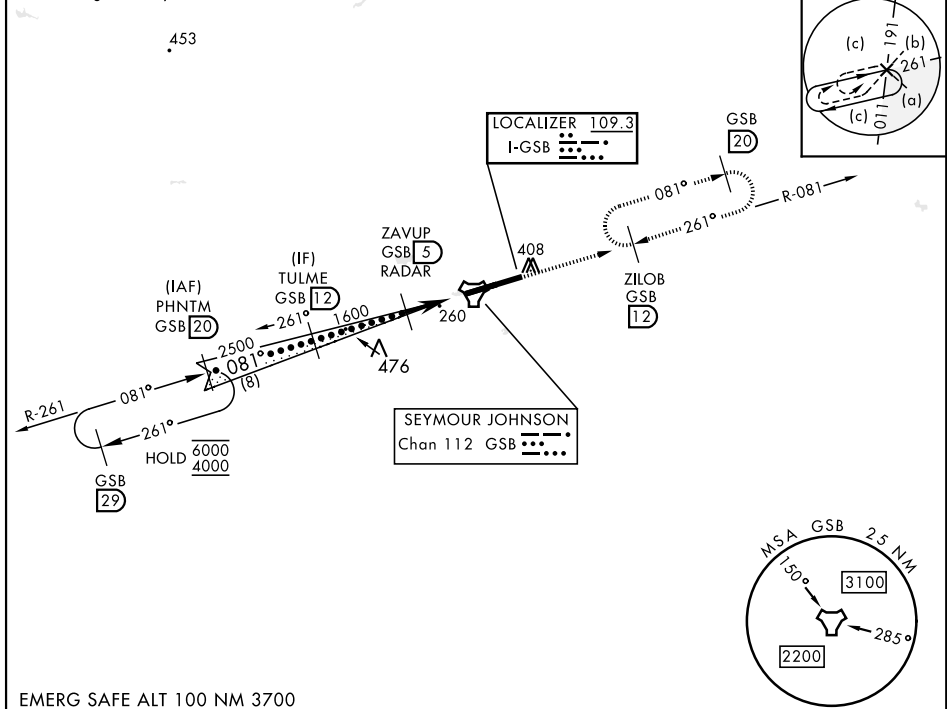
ALSF-1

MISSED APPROACH: Climb to 2300 via GSB R-081 to ZILOB and hold.

▲ \* When ALS inop, increase RVR to 40 and vis to 3/4 mile.  
 \*\* When ALS inop, increase vis to 1 3/8 miles.

ATIS ★ <b>317.625</b>	APP CON <b>123.7 290.9</b> (258°- 110°) <b>119.7 273.6</b> (111°- 257°)	TOWER ★ <b>126.25 370.875</b>	GND CON <b>132.45 275.8</b>	CLNC DEL <b>128.025 270.8</b>
--------------------------	---	----------------------------------	--------------------------------	----------------------------------

\*\*\* Circling N of Rwy 8-26 not authorized.



SE-2, 31 OCT 2024 to 28 NOV 2024

SE-2, 31 OCT 2024 to 28 NOV 2024

EMERG SAFE ALT 100 NM 3700

VGSi and ILS glidepath not coincident (VGSi Angle 3.00/TCH 55). 			2300 GSB R-081 ZILOB R-081 (12)	ELEV 109	TDZE 73
PHNTM R-261 (20) TULME (12) ZAVUP RADAR (5) SOBOE (3) JAVIX (0.9) TACAN	4000 2500 1600 940	2 NM 2.1 NM 0.5		HIRL Rwy 8-26 FAF to MAP 4.1 NM	
CATEGORY	C	D	E		
S-ILS 8*	273/24	200	(200-1/2)		
S-LOC 8**	520/45	447	(500-3/4)		
*** CIRCLING	680-1 1/2	740-2	740-2 1/4	Knots	120 140 160 180 200
	571 (600-1/2)	631 (700-2)	631 (700-2 1/4)	Min:Sec	2:03 1:45 1:32 1:22 1:14

GOLDSBORO, NORTH CAROLINA

35° 20' N-77° 58' W

SEYMOUR JOHNSON AFB (KGSB)

Amtd 8 03NOV22

# HI-ILS or LOC Z RWY 8