

LOC/DME I-LLG <b>109.55</b> Chan 32(Y)	APP CRS <b>054°</b>	Rwy Idg TDZE <b>9000</b> <b>916</b> Apt Elev <b>926</b>
--	------------------------	---

# ILS RWY 5L (CAT II & III)

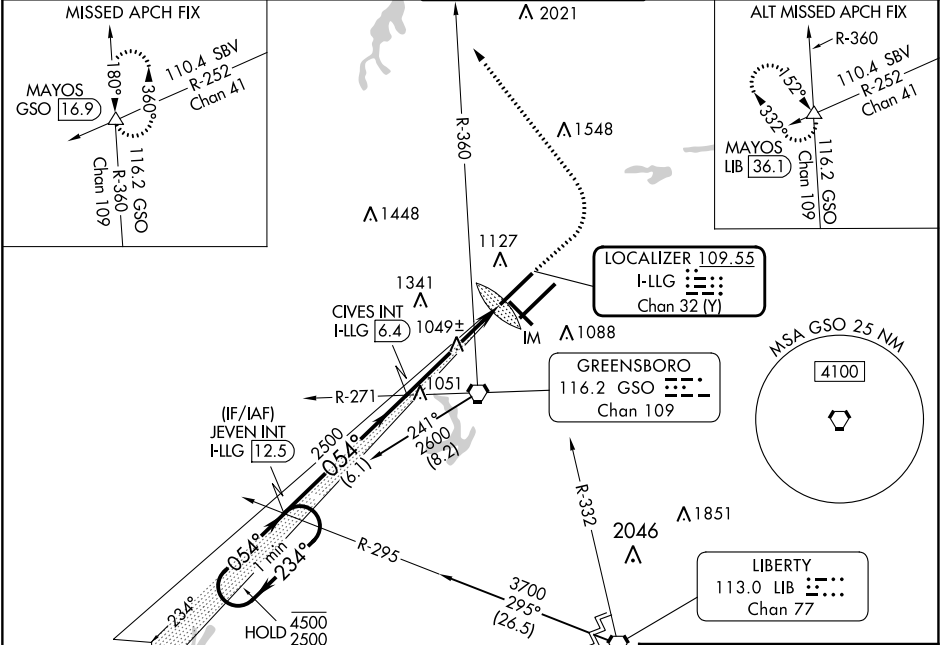
PIEDMONT TRIAD INTL (GSO)

DME or RADAR required for procedure entry at LIB VORTAC.  
 Simultaneous approach authorized.

ALSF-2

MISSED APPROACH: Climb to 1400 then climbing left turn to 3100 on heading 330° and GSO VORTAC R-360 to MAYOS INT/GSO 16.9 DME and hold.

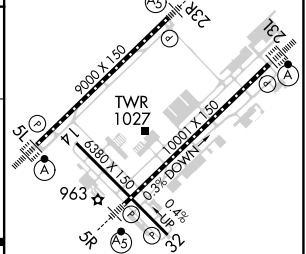
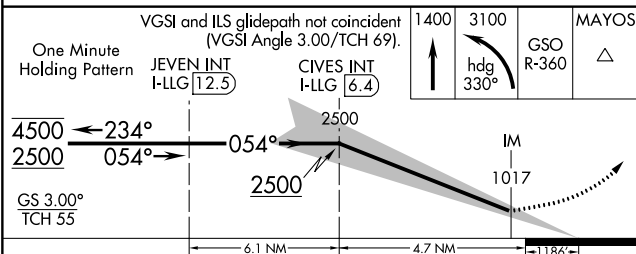
D-ATIS <b>128.55</b>	GREENSBORO APP CON <b>124.35 269.225</b> <b>126.6 327.075</b> (050°-249°)	GREENSBORO TOWER <b>119.1 290.325</b>	GND CON <b>121.9 348.6</b>	CLNC DEL <b>121.75</b>
-------------------------	---	--	-------------------------------	---------------------------



SE-2, 31 OCT 2024 to 28 NOV 2024

SE-2, 31 OCT 2024 to 28 NOV 2024

ELEV 926	<b>D</b> TDZE 916
----------	-------------------



CATEGORY	A	B	C	D
S-ILS 5L	CAT II RA 113/12 100 DA 1016			
S-ILS 5L	CAT III RVR 06			

## CATEGORY II & III ILS - SPECIAL AIRCREW & AIRCRAFT CERTIFICATION REQUIRED

TDZ/CL Rwy's 5L, 23R and 23L  
 REIL Rwy 32  
 HIRL Rwy's 14-32, 5R-23L and 5L-23R