

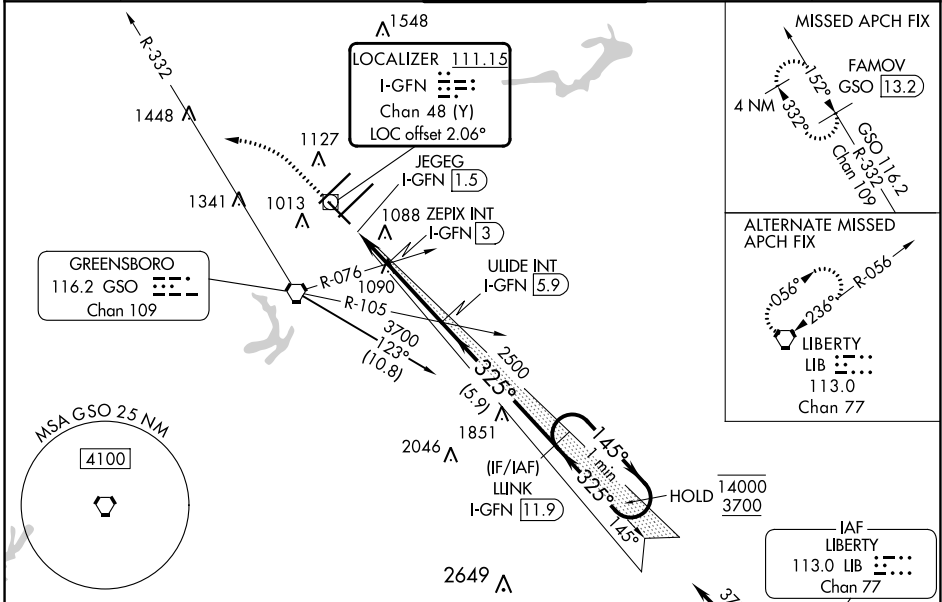
LOC/DME I-GFN 111.15 Chan 48 (Y)	APP CRS 325°	Rwy Idg 6380 TDZE 902 Apt Elev 926
---	------------------------	---

ILS Z or LOC Z RWY 32

PIEDMONT TRIAD INTL (GSO)

DME required.		MISSED APPROACH: Climb to 1400 then climbing left turn to 3700 on heading 307° and GSO VORTAC R-332 to FAMOV/GSO 13.2 DME and hold.
Rwy 32 helicopter visibility reduction below 3/4 SM NA.		

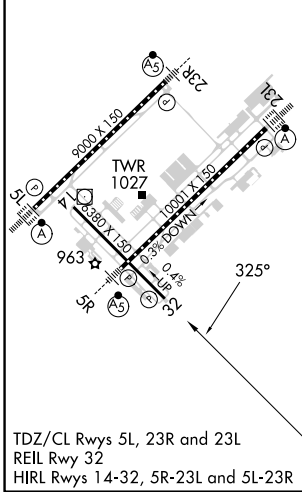
D-ATIS 128.55	GREENSBORO APP CON 124.35 269.225 (250°-049°) 126.6 327.075 (050°-249°)	GREENSBORO TOWER 119.1 290.325	GND CON 121.9 348.6	CLNC DEL 121.75
-------------------------	---	--	-------------------------------	---------------------------



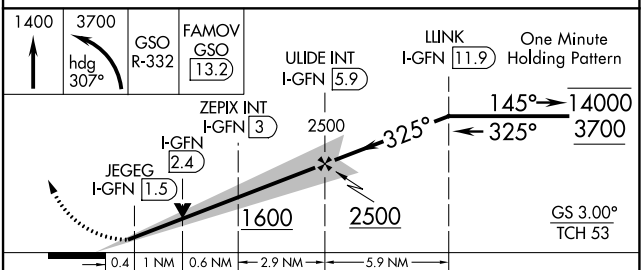
SE-2, 31 OCT 2024 to 28 NOV 2024

SE-2, 31 OCT 2024 to 28 NOV 2024

ELEV 926	D TDZE 902
----------	-------------------



TDZ/CL Rws 5L, 23R and 23L
REIL Rwy 32
HIRL Rws 14-32, 5R-23L and 5L-23R



CATEGORY	A	B	C	D
S-ILS 32	1152-3/4 250 (300-3/4)			
S-LOC 32	1400-1	498 (500-1)	1400-1 3/8	498 (500-1 3/8)
C CIRCLING	1440-1	514 (600-1)	1700-2 1/4 774 (800-2 1/4)	1700-2 1/2 774 (800-2 1/2)