

LOC I-GMU <b>109.7</b>	APP CRS <b>006°</b>	Rwy Idg <b>5393</b> TDZE <b>1015</b> Apt Elev <b>1048</b>
---------------------------	------------------------	---

# ILS or LOC RWY 1

GREENVILLE DOWNTOWN (GMU)

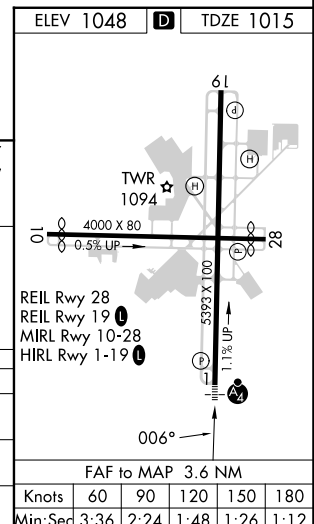
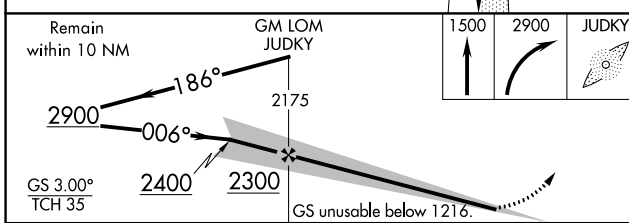
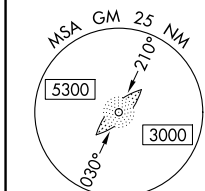
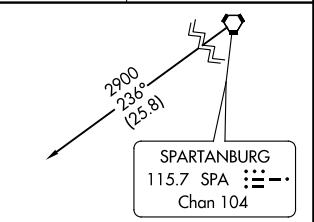
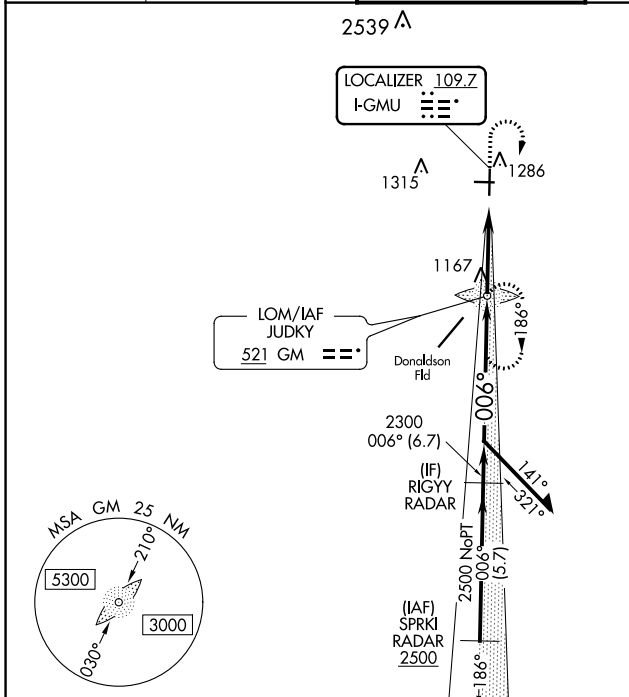
ADF required. RADAR required for procedure entry at SPRKI.

**⚠** Inop table does not apply to S-ILS 1 all Cats. For inop ALS, increase S-LOC 1 visibility Cats C/D to 1 1/2 SM. When local altimeter setting not received, use Greer altimeter setting and increase DA to 1248, increase all MDAs 40 feet and Circling Cat C visibility 1/4 SM. For inop ALS when using Greer altimeter setting, increase S-LOC 1 visibility Cat C/D to 1 1/2 SM. When using Greer altimeter setting, inop table does not apply to S-ILS 1 all Cats.

**MALSIF**

**MISSED APPROACH:** Climb to 1500 then climbing right turn to 2900 direct JUDKY LOM and hold, continue climb-in-hold to 2900.

ATIS ★ <b>127.075</b>	GREER APP CON★ <b>118.8 270.275</b>	GREENVILLE TOWER★ <b>119.9 (CTAF) 257.7</b>	GND CON <b>121.25</b>	UNICOM <b>122.95</b>
--------------------------	--	--	--------------------------	-------------------------



CATEGORY	A	B	C	D
S-ILS 1	1216-3/4		201 (200-3/4)	
S-LOC 1	1420-3/4	405 (400-3/4)	1420-1	405 (400-1)
<b>C</b> CIRCLING	1620-1	572 (600-1)	1780-2 732 (800-2)	1860-2 3/4 812 (900-2 3/4)

FAF to MAP 3.6 NM					
Knots	60	90	120	150	180
Min:Seq	3:36	2:24	1:48	1:26	1:12

SE-2, 31 OCT 2024 to 28 NOV 2024

SE-2, 31 OCT 2024 to 28 NOV 2024