


|  |                        |                             |   |
|--|------------------------|-----------------------------|---|
| WAAS<br>CH <b>82539</b><br><b>W27A</b> | APP CRS<br><b>272°</b> | Rwy Idg<br>TDZE<br>Apt Elev | <b>5001</b><br><b>629</b><br><b>631</b> |
|--|------------------------|-----------------------------|---|

AL-183 (FAA)

**RNAV (GPS) RWY 27**  
GREENWOOD COUNTY (G.R.D)

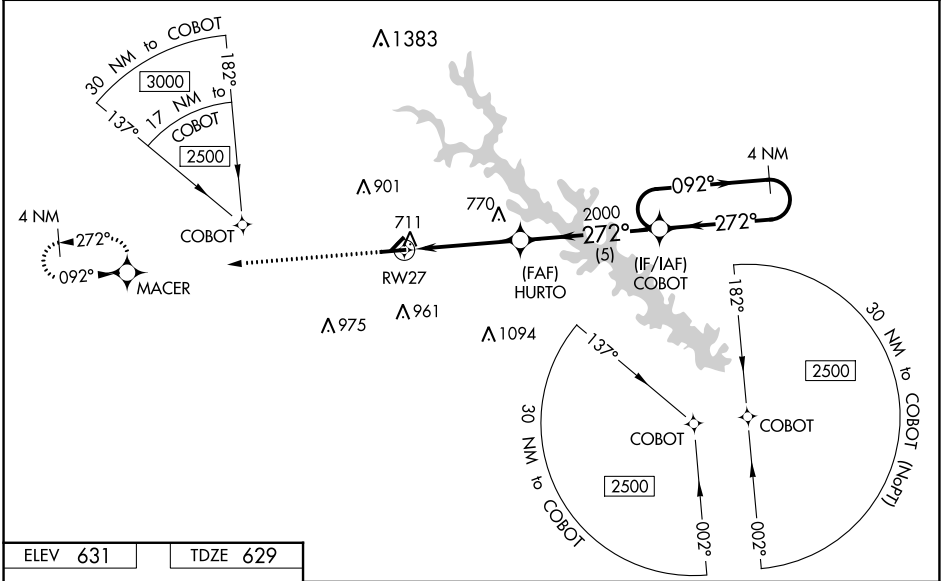
For uncompensated Baro-VNAV systems, LNAV/VNAV NA below -10°C (14°F) or above 54°C (130°F). Baro-VNAV and VDP NA when using Laurens altimeter setting. DME/DME RNP-0.3 NA. Circling Rwy 5, 23 NA at night. Rwy 27 helicopter visibility reduction below 3/4 SM NA. When local altimeter setting not received, use Laurens altimeter setting: increase LPV DA to 932 feet and all visibilities 1/8 SM; increase LNAV/VNAV DA to 936 feet and all visibilities 1/8 SM; increase all MDA 60 feet and LNAV visibility Cats C and D 1/8 SM and Circling visibility Cats C and D 1/4 SM. For inop ALS, increase LNAV/VNAV all Cats visibility to 1/8 SM and LNAV all Cats visibility to 1 SM. For inop ALS when using Laurens altimeter setting, increase LPV and LNAV/VNAV all Cats and LNAV Cats A and B visibility to 1 SM and LNAV Cats C and D visibility to 1 1/8 SM.

**ODALS**  
 MISSED APPROACH: Climb to 2500 direct MACER and hold.

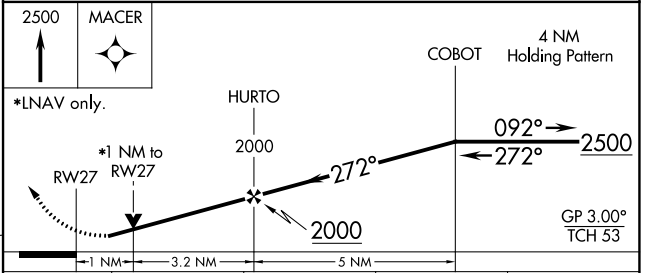
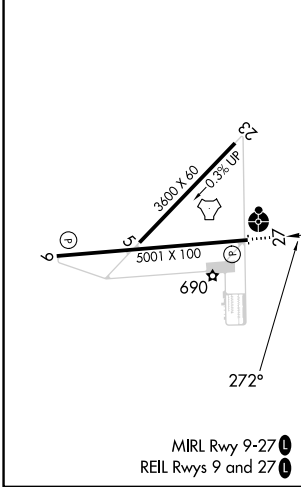
ASOS  
**121.125**

GREER APP CON ★  
**120.6 350.2**

UNICOM  
**122.975 (CTAF) 0**



|                 |                 |
|-----------------|-----------------|
| ELEV <b>631</b> | TDZE <b>629</b> |
|-----------------|-----------------|



| CATEGORY          | A                     | B                     | C                     | D                             |
|-------------------|-----------------------|-----------------------|-----------------------|-------------------------------|
| LPV DA            |                       | 879-3/4               | 250 (300-3/4)         |                               |
| LNAV/VNAV DA      |                       | 883-3/4               | 254 (300-3/4)         |                               |
| LNAV MDA          | 980-3/4               | 351 (400-3/4)         | 980-7/8               | 351 (400-7/8)                 |
| <b>C</b> CIRCLING | 1080-1<br>449 (500-1) | 1100-1<br>469 (500-1) | 1320-2<br>689 (700-2) | 1340-2 1/4<br>709 (800-2 1/4) |

SE-2, 31 OCT 2024 to 28 NOV 2024

SE-2, 31 OCT 2024 to 28 NOV 2024