

HI-ILS or LOC Z RWY 26

LOC I-ABM 109.9	APCH CRS 258°	Rwy Idg 10,002
		TDZE 8
		Arprt Elev 8

[USAF]

LANGLEY AFB (KLFJ)

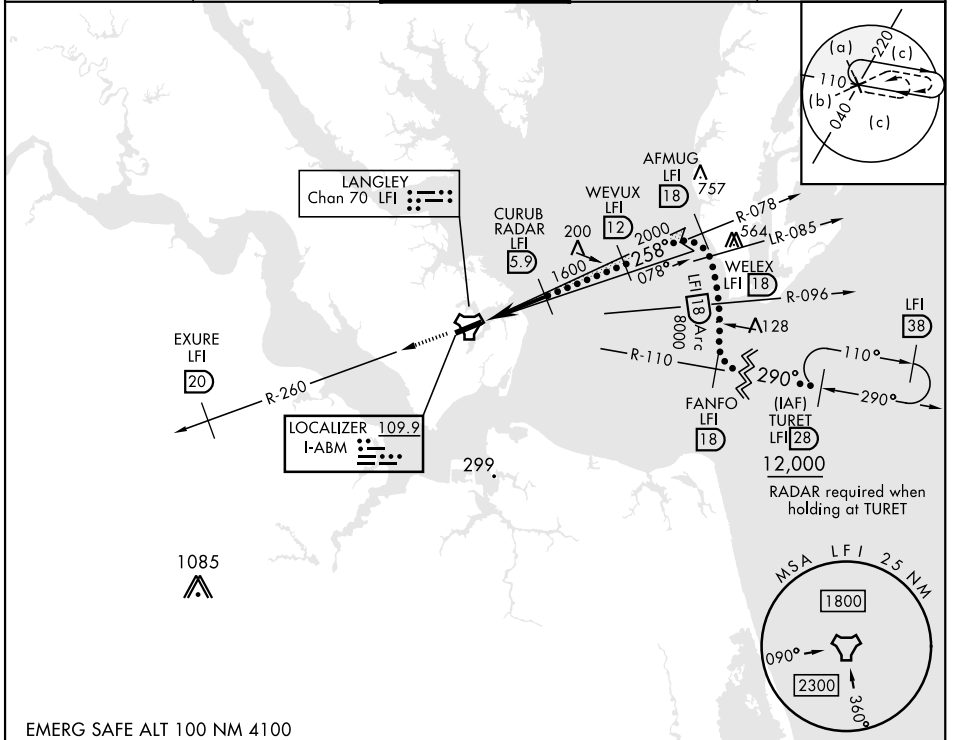
RADAR or DME required.



MISSED APPROACH: Climb to 3000 via LFI R-260 to 20 DME (EXJURE), then as instructed by ATC.

- *When ALS inop, increase RVR to 40, vis to 3/4 mile.
- **When ALS inop, increase RVR to 55, vis to 1 miles.
- ***Circling S of Rwy 8-26 not authorized.

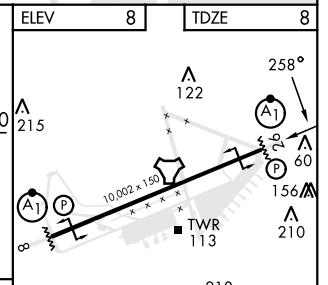
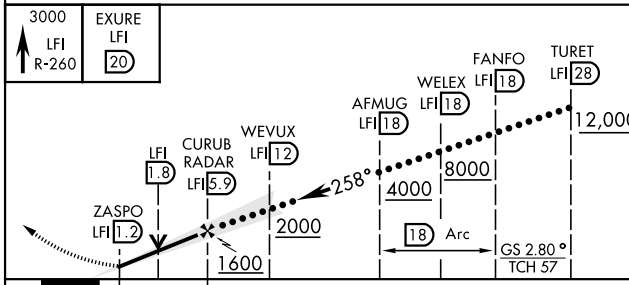
ATIS ★ 270.1	NORFOLK APP CON 125.7 335.625	TOWER ★ 125.0 253.5	GND CON 121.7 275.8	CLNC DEL 118.85 257.625
------------------------	---	-------------------------------	-------------------------------	-----------------------------------



NE-3, 31 OCT 2024 to 28 NOV 2024

NE-3, 31 OCT 2024 to 28 NOV 2024

EMERG SAFE ALT 100 NM 4100



CATEGORY	C	D	E
S-ILS 26*	208/24	200	(200-1/2)
S-LOC 26**	380/35	372	(400-5/8)
CIRCLING ***	700-2	760-2 1/2	760-2 3/4
	692 (700-2)	752 (800-2 1/2)	752 (800-2 3/4)

ELEV	8	TDZE	8		
HIRL Rwy 8-26					
FAF to MAP 4.7 NM					
Knots	120	140	160	180	200
Min:Sec	2:21	2:01	1:46	1:34	1:25

HI-ILS or LOC Z RWY 26