

HI-TACAN Z RWY 26

TACAN Chan 70	APCH CRS 263°	Rwy ldg 10,002 TDZE 8 Arprt Elev 8
-------------------------	-------------------------	---

[USAF]

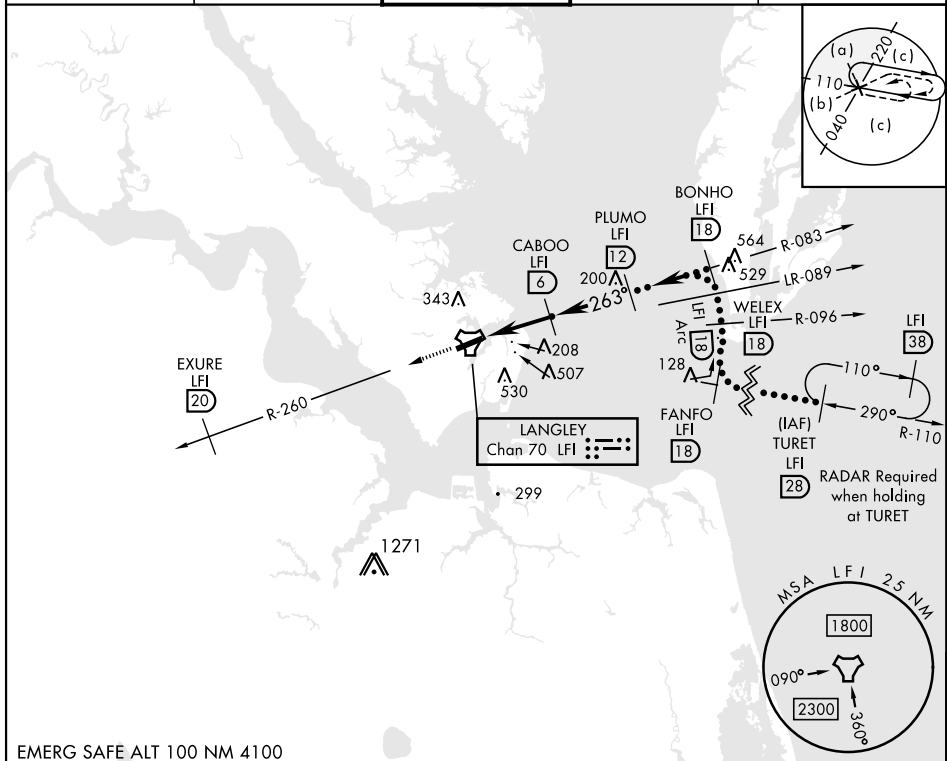
LANGLEY AFB (KLFJ)

▼ *When ALS inop, increase CAT CDE vis to 1 $\frac{1}{2}$ miles.
 ** Circling S of Rwy 8-26 not authorized.

ALSF-1

MISSED APPROACH: Climb to 3000 via LFI R-260 to 20 DME (EXURE), then as instructed by ATC.

ATIS ★ 270.1	NORFOLK APP CON 125.7 335.625	TOWER ★ 125.0 253.5	GND CON 121.7 275.8	CLNC DEL 118.85 257.625
------------------------	---	-------------------------------	-------------------------------	-----------------------------------



EMERG SAFE ALT 100 NM 4100

3000 LFI R-260	EXURE LFI (20)	ELEV 8	TDZE 8
CATEGORY	C	D	E
S-26 *	480/50	472	(500-1)
CIRCLING **	700-2 692 (700-2)	760-2 $\frac{1}{2}$ 752 (800-2 $\frac{1}{2}$)	760-2 $\frac{3}{4}$ 752 (800-2 $\frac{3}{4}$)
	HIRL Rwy 8-26		

HI-TACAN Z RWY 26

NE-3, 31 OCT 2024 to 28 NOV 2024

NE-3, 31 OCT 2024 to 28 NOV 2024